

Kent County LEVY COURT

Serving Kent County with Pride

Community Newsletter & Parks, Recreation
and Library Activity Guide



Summer 2024

follow us!



'Like' us!

@KCLevyCourt



About the LEVY COURT

Levy Court is your County government. Kent County Levy Court is comprised of seven elected Commissioners: six are elected from the districts in which they reside, and the seventh is elected at-large to represent the entire county. The Commissioners serve at the will of the electorate and answer solely to their constituents. Since the Commissioners are elected officials, it is customary to refer to them with the designation of Honorable.

Levy Court responsibilities include: enacting planning and land use ordinances; providing parks and recreation facilities; establishing fees; providing emergency medical services; 911

communications; emergency management; approving sewer system construction; establishing the yearly tax rate and overseeing the county departments that support the mission of Levy Court. The Commissioners appoint a County Administrator who is responsible for managing the day-to-day operations of county government.

Levy Court offices are located at 555 Bay Road. Residents may call 744-2300 to reach a County Office.

For more information on Levy Court, please visit our website at www.kentcountyde.gov.



HON. TERRY L. PEPPER
President
Commissioner At-Large
302-697-9194



HON. ALLAN F. ANGEL
Vice-President
Commissioner 3rd District
Committee: Administration
302-382-6735



HON. JOANNE MASTEN
Commissioner 1st District
Committee:
Planning Services
302-270-1747



HON. JEFFREY W. HALL
Commissioner 2nd District
Committee:
Finance Committee
302-632-0757



HON. ROBERT J. SCOTT
Commissioner: 4th District
Committee:
Public Safety
302-505-0198



HON. JODY SWEENEY
Commissioner 5th District
Committee:
Community Services
302-943-7328



HON. PAUL HERTZ
Commissioner 6th District
Committee:
Public Works
302-505-2310

About the ROW OFFICES

Kent County has four Row Officers: each of which is an elected official. Row Officers serve four year terms and each is empowered to manage their office. Each row office performs a distinct function within the County Government.

Row Officers are held accountable to the electorate and it is customary to refer to them with the designation of Honorable. These offices are open Monday through Friday from 8:00 A.M. to 5:00 P.M.

REGISTER OF WILLS:

Hon. Harold K. Brode
Harold.Brode@kentcountyde.gov
302-744-2330

Chief Deputy -
Dianne M. Rager

Dianne.Rager@kentcountyde.gov
302-744-2328

RECORDER OF DEEDS:

Hon. Eugenia Thornton
Eugenia.Thornton@kentcountyde.gov
302-744-2321

Deputy - Darin Dell

Darin.Dell@kentcountyde.gov
302-744-2318

CLERK OF THE PEACE:

Hon. Brenda Wootten
Brenda.Wootten@kentcountyde.gov
302-744-2346

Deputy - Patricia A. Brown

Trish.Brown@kentcountyde.gov
302-744-2347

SHERIFF:

Hon. Norman Barlow
Norman.Barlow@kentcountyde.gov
302-736-2161

Chief Deputy - Robert Daddio

Robert.Daddio@kentcountyde.gov
302-736-2161

Kent County PHONE DIRECTORY

**Kent County
Administrative Complex
555 Bay Road
Dover, DE 19901**

Levy Court	302-744-2305
Assessment Office	302-744-2401
Building Permits & Inspections	302-744-2451
Code Enforcement	302-744-2452
Community Development	302-744-2480
Economic Development	302-678-3028
Engineering	302-744-2430
Facilities Management	302-744-2357
Finance	302-744-2386
Tax Section	302-744-2341
GIS/Mapping	302-744-2416
Information Technology	302-744-2365
Parks & Recreation	302-744-2495
Personnel	302-744-2310
Planning	302-744-2471

**Kent County Emergency Services Building
911 Public Safety Boulevard
Dover, DE 19901**

Emergency Communications	302-735-2200
Emergency Management	302-735-3465
Emergency Medical Services	302-735-2180

**Kent County Library
497 South Red Haven Lane
Dover, DE 19901**

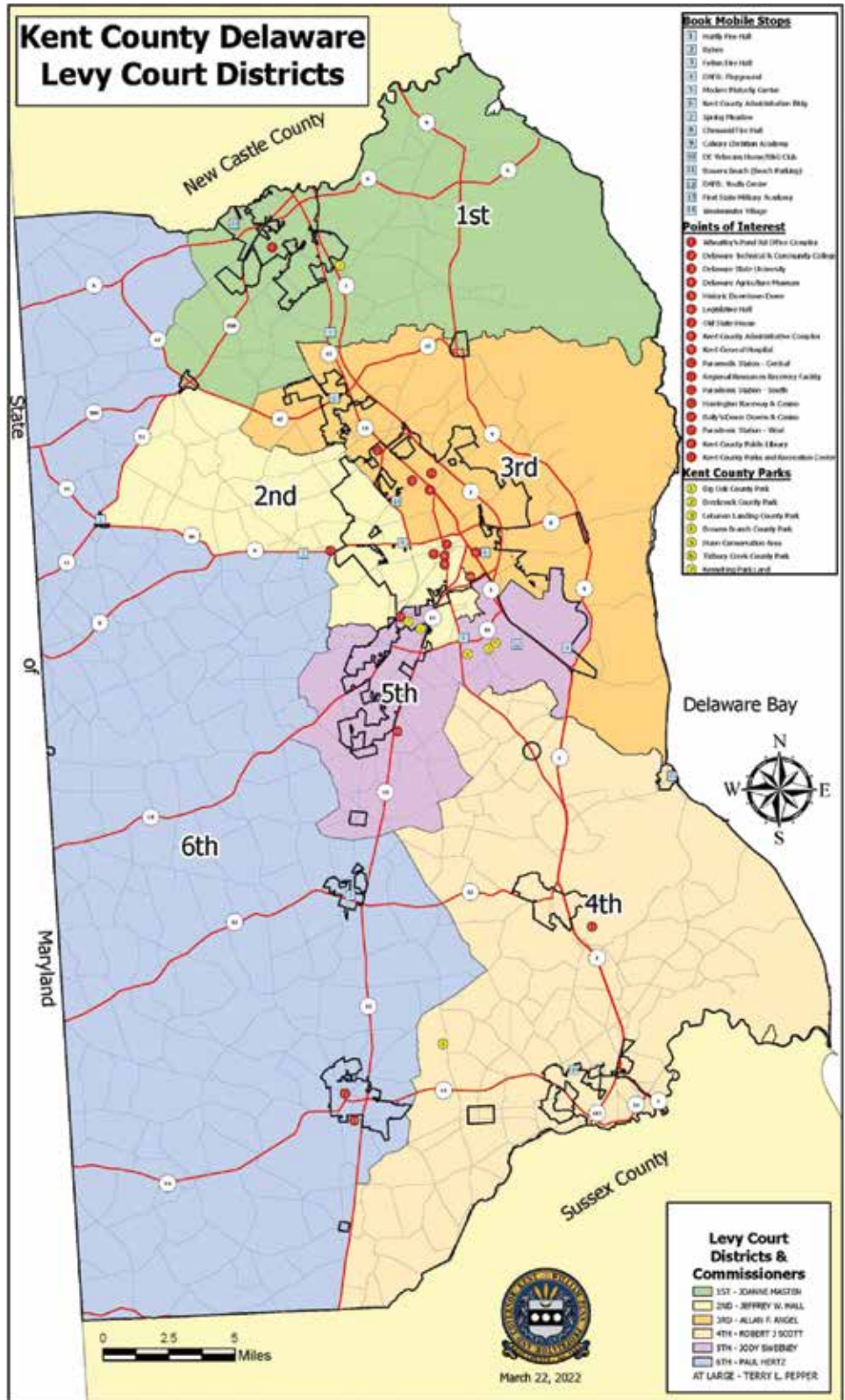
Library Services	302-744-1919
------------------	--------------

**Kent County Parks and Recreation
1683 New Burton Road
Dover, DE 19904**

Main Number	302-744-2495
-------------	--------------

**Kent County Wastewater Treatment Plant
139 Milford Neck Road
Milford, DE 19963**

Wastewater Facilities	302-335-6000
-----------------------	--------------



Why Can't I CHANGE MY DEED?



by Hon. Eugenia Thornton,
Kent County Recorder of Deeds

“Please change my Deed” is the most frequent request received in the Recorder of Deeds office.

Many incorrectly assume they can stop by our office and fill out a form to update a Deed after a life change event such as a name change, divorce, mutual agreement, or death.

Deeds are legal documents that cannot be updated, amended, or erased. The only way to “change” a Deed is to record a new one.

Once recorded, Deeds remain in the “chain of title” forever. Our electronic, searchable database uslandrecords.com has records dating back to 1874. Books in our office go back to 1646.

Property is most often acquired by buying it or inheriting it.

If you buy property:

◆ By state law, a Delaware attorney must be involved in trans-

fer of title to Delaware realty or where Delaware realty is used as security, such as when there is a mortgage.

◆ There is an exception for home equity loans under certain circumstances, though we recommend a Delaware attorney be involved for best practice.

If you inherit property:

◆ Many people incorrectly assume that a new deed is created when property is inherited.

◆ Instead, the new owner is updated on county tax records via probate filings with the Register of Wills.

We recommend you consult a Delaware attorney when you want to:

◆ Update title due to a life event (e.g., name change, divorce, mutual agreement, death).

◆ Transfer title to realty via sale, purchase, gift, etc.

◆ Obtain a Deed for inherited property.

Please call 302 744 2321 or email recorder@kentcountyde.gov and ask for our factsheet “Why Can't I Change my Deed?” for more information.

Kent County Introduces REDESIGNED WEBSITE

Kent County Levy Court proudly unveils a preview of its latest innovation in public service: the launch of a cutting-edge website designed to enhance citizen engagement, streamline services, and foster transparency. This milestone represents a significant leap forward in our commitment to modernize governance and serve our community with efficiency and effectiveness. The website will launch in June.

The new Kent County website boasts an array of user-friendly features tailored to meet the diverse needs of our citizens. Simplified navigation ensures that users can effortlessly navigate through various departments, services, and resources with ease. Whether you're seeking information on permits, county services, or community events, finding what you need will be simpler than ever. The website is designed to be accessible to all individuals, including those with disabilities, ensuring that everyone can fully participate in civic life and access vital services without barriers. Accessibility is a cornerstone of our commitment to inclusivity.

Recognizing the importance of mobile technology in today's fast-paced world, the website is fully optimized for mobile devices. Whether you're at home, at work, or on the go, you can conveniently access government services and information anytime, anywhere from online forms for various applications to “Reggie” our automated BOT to answer common questions about various county services or guide users to relevant help center articles. Allowing our citizens to self-solve their issues and or trigger actions to forward information requests to the designated resource to respond, the website offers a range of dynamic features aimed at facilitating seamless interactions between citizens and government agencies.

We believe in open governance, and our new website reflects



this commitment by providing easy access to county information, meeting schedules, and more. By promoting transparency and accountability, we aim to build trust and confidence in our government institutions. The launch of this state-of-the-art website marks a significant milestone in our ongoing efforts to modernize government services and better serve our community. Kent County Web Administrator, Jenifer Sandonato said, “we have been very intentional to build a unique website that hosts a variety of resources, calendars, and information relevant to our efforts to help support our growing County”.

We invite all citizens to explore the new website at www.kentcountyde.gov and experience the future of civic engagement firsthand.

Kent County Library Clerk Masterminds a NATIONALLY RECOGNIZED PEN-PAL PROGRAM

Robin Agar is familiar to many families throughout Kent County as “Miss Robin,” the storyteller who leads Kent County Public Library’s well-attended weekly preschool story time each Thursday at 10 a.m. The part-time contracted employee, recognizing the importance of early childhood literacy, also coordinates the library’s “1000 Books Before Kindergarten” reading challenge, with support from the Friends of Kent County Public Library. Robin also records Kent County Public Library’s “Dial-a-Story” (302-741-4171); stories are changed frequently, and the service is free and available 24/7 for everyone calling in from anywhere – no library card required!

While putting together a display of library cards from around the world to celebrate the 2023 Summer Reading Program theme “All Together Now,” Robin gathered cards from libraries on all seven continents and all U.S. States and territories and displayed them, along with maps, in the children’s section of the Kent County Public Library. The display received a lot of attention. Children as well as adults enjoyed seeing all the different cards. It was from her contact for New Zealand’s library card that the idea blossomed for a partnership with Wellington City Libraries for an international pen pal program, <https://programminglibrarian.org/programs/international-pen-pal-program-new-zealand>.

The pen pal program launched in June 2023 and is still going strong. There was so much interest that the program

was opened to other Delaware Libraries. There are now nine Delaware libraries taking part, including all three Delaware counties. The initial pool of participating patrons has grown from 300 to over 540 participants and continues to grow each week!

Adults, teens, and children (6+) are enjoying new friendships with people living on the other side of the world while savoring the anticipation of receiving “snail mail.” Through this, true, meaningful connections are being forged. Because of the program’s success, it is the focus of an upcoming workshop at the 2024 Delaware Library Association Conference and has recently been recognized nationally by the American Library Association as a model Pen-Pal Program.

Patrons who register for this program are carefully matched with a pen pal in New Zealand. All letters are dropped off and picked up at participating libraries for safety and convenience! Approximately once every other month, a package is mailed from Delaware to New Zealand. The Friends of Kent County Public Library generously cover the cost of postage. Then, in the months between Delaware’s mailings, a return package arrives from Wellington, NZ. Patrons typically have about two weeks to pick up letters and write responses. Participants are unquestionably excited when letters arrive!

The pen pal program shows no signs of slowing down. New participants sign



Robin Apgar shows the many letters received in one month. The letters will be sorted and distributed throughout all participating libraries.

up each week and both countries enjoy learning about each other and fostering new connections. For those who would like to take part, registration forms are available at Kent County Public Library’s front desk. All children under the age of 18 must have signed parental consent to participate.

Robin Agar is a creative, talented woman. She initiated and videotapes the library’s annual Countdown Crafts series, a successful online video program with craft tutorials posted every day in December. During the COVID closure, Robin recorded the library’s weekly story time which was viewable on Facebook, @KCPLibrary. She is also the creator of the Delaware Head Huggers (DEHH), a charity that makes and donates chemo caps to cancer patients throughout the United States. Kent County Public Library is DEHH’s main drop-off site. In her free time, Robin is a dedicated wildlife photographer.

Register of Wills Office Installs NEW SOFTWARE TO IMPROVE PRODUCTIVITY

Registrar of Wills, Harold Brode announces the installation of a new software product that will improve efficiency in managing probate caseloads.

As of March 4, 2024, the Register of Wills Office went live with their new Estate Case Management software.

This new software “Bluestone” allows staff to assist the public faster and more efficiently by streamlining the process and cutting down on repetitive data en-

try. For example, many cases involve several documents, some as many as ten.

Rather than uploading and filling in the common information on all ten forms, this new software will automatically fill in the blanks.

Another benefit is that Kent County will now be using the same forms as Sussex County Register of Wills which alleviates the necessity of having the Attorney keep track of different forms

for each county.

“We are very excited to implement this new program and are always working on solutions to better serve the general public”, said Harold Brode.

The software will also provide online estate case search capability. The new software also allows the public to search the database on a particular person, however, the documents will not be available online for privacy reasons.

Kent County Prepares for the 2024 HURRICANE SEASON

On Friday, March 7, 2024 Kent County Department of Public Safety, Emergency Management Division organized an Emergency Operations drill to engage County personnel and emergency support functions in demonstrating strategic coordination of response and recovery operations.

Staff from across all Kent County Departments were represented including Public Works Engineering and GIS; Information Technology; Planning, Inspections and Enforcement and GIS; Administration; and of course, all three divisions of the Department of Public Safety.

Also, there were staff from Delaware State Fire School, DelDOT, DEMA, Delaware Division of Public Health – DPH, Delaware Electric Cooperative, Delmarva Power (Delaware Connect), Food Bank of Delaware, and United Way of Delaware.

The operation went well, and by having such a broad cross-section across agencies, unknown facts and resources were discovered, even within the Department.

Simulated, was a severe weather event designed for agencies to work together to overcome many obstacles and challenges while learning where to make improvements.



Pictured from left, front row: Danny McLaughlin, Todd Tush, John Tinger, Colby Harrington, Dylan Carrar, Megan Cox, Kelly Pitts, Robert Watts. Second row: Justin Conrad, Kevin Sipple, Colin Arnold, Brandon Olenik, Jeff Outten, Kyle Satterfield, and Joseph Simmons



Colin Arnold, GIS Analyst for KCDPS, Emergency Communications Division shows how he used GIS mapping to identify First Responders locations or damaged areas.

With Hurricane Season approaching June 1 – November 30, it's crucial to prioritize safety. Here are some essential tips to help you prepare, respond, and recover:

1. Plan Ahead:

- ◆ **Stay Informed:** Keep an eye on weather updates and official advisories.
- ◆ **Emergency Supplies:** Stock up on essentials like water, non-perishable food, medications, flashlights, batteries, and first aid supplies. * See below.
- ◆ **Family Disaster Plan:** Create a plan with your family, including evacuation routes and communication methods.

2. During the Storm:

- ◆ **Evacuation Orders:** Follow evacuation orders promptly. Don't delay.
- ◆ **Stay Indoors:** Seek shelter away from windows and doors.
- ◆ **Avoid Floodwaters:** Floodwaters may contain sewage, bacteria, and chemicals. Don't touch them.
- ◆ **Carbon Monoxide:** Use generators and grills outdoors to prevent carbon monoxide poisoning.
- ◆ **Stay Connected:** Let friends and family know you're safe.

3. After the Hurricane:

- ◆ **Wait for Officials:** Only return home when authorities declare it safe.
- ◆ **Avoid Hazards:** Watch out for fallen power lines, damaged structures, and debris.
- ◆ **Water Safety:** Don't drink tap water unless authorized. Check your fridge and freezer temperatures.

5. Emotional Well-Being:

- ◆ Take care of your mental and physical health.

6. Report Your Experience:

- ◆ Share your hurricane story to help educate others and potentially save lives in the future.

Remember, hurricanes are powerful and unpredictable. Prioritize safety, stay informed, and support one another during these challenging times.

Recommended Items to Include in a BASIC EMERGENCY SUPPLY KIT:



- Water and non-perishable food for several days
- Extra cell phone battery or charger
- Battery-powered or hand crank radio that can receive NOAA Weather Radio tone alerts and extra batteries
- Flashlight and extra batteries
- First aid kit
- Whistle to signal for help
- Dust mask, to help filter contaminated air and plastic sheeting and duct tape to shelter-in-place
- Moist towelettes, garbage bags and plastic ties for personal sanitation
- Non-sparking wrench or pliers to turn off utilities
- Can opener (if kit contains canned food)
- Local maps

FEMA's Ready Campaign

educates and empowers Americans to take some simple steps to prepare for and respond to potential emergencies, including those from natural hazards and man-made disasters. Ready asks individuals to do three key things: get an emergency supply kit, make a family emergency plan, and be informed about the different types of emergencies that could occur and appropriate responses. Everyone should have some basic supplies on hand in order to survive several days if an emergency occurs. This list of emergency supply kit items is only a starting point. It is important that individuals review this list and consider the unique needs of their family, including pets, for items to include. Individuals should also consider having at least two emergency supply kits, one full kit at home and smaller portable kits in their workplace, vehicle or other places they spend time.



Additional Items to Consider Adding to an Emergency Supply Kit:

- Prescription medications and glasses
- Infant formula and diapers
- Pet food, water and supplies for your pet
- Important family documents such as copies of insurance policies, identification and bank account records in a portable waterproof container
- Cash and change
- Emergency reference material such as a first aid book or information from www.ready.gov
- Sleeping bag or warm blanket for each person. Consider additional bedding if you live in a cold-weather climate.
- Complete change of clothing including a long sleeved shirt, long pants and sturdy shoes. Consider additional clothing if you live in a cold-weather climate.
- Fire Extinguisher
- Matches in a waterproof container
- Feminine supplies, personal hygiene items and hand sanitizer
- Mess kits, Paper cups, plates and disposable utensils, paper towels
- Paper and pencil
- Books, games, puzzles or other activities for children



Ready

Prepare. Plan. Stay Informed.®



Emergency Supply List



Lauren Guterrez Hired as ASSISTANT COUNTY ADMINISTRATOR FOR KENT COUNTY

We are thrilled to announce that Lauren Guterrez as Assistant County Administrator for Kent County Levy Court. With her extensive experience and dedication to public service, Lauren brings a wealth of knowledge to our team.

In her new role, Lauren will be actively involved in supporting the County Administrator and collaborating with various departments to ensure the smooth operation of county government. Her commitment to excellence and community welfare will undoubtedly contribute to the continued growth and success of Kent County.

“With heartfelt appreciation for the experiences that have shaped me and enthusiasm for what lies ahead, I am privileged to become a member of the Kent County Levy Court team. As a lifelong resident, my dedication to serving our exceptional county is unwavering, and I am committed to making a positive and lasting impact in my new role,” said Ms. Gutierrez.

With nearly a decade of distinguished service in the Kent County Office of United States Senator Tom Carper, Ms. Gutierrez brings a wealth of experience to her new role as Assistant County Administrator. In her most recent position as Kent County Regional Director, she adeptly navigated responsibilities such as assessing Congressionally Directed Spending applications, representing Senator Carper at key meetings and events, managing relationships with federal and district agencies, businesses, and non-profit organizations, and overseeing the operations of the Senator’s Kent County office.

Prior to her Regional Director role, Ms. Gutierrez served as an Executive Assistant/Scheduler for Senator Carper, demonstrating exceptional proficiency in attending to daily administrative needs, fostering professional relationships with diverse stakeholders, and handling the Senator’s correspondence with precision.

Beyond her Capitol Hill experience, Ms. Gutierrez served as Program Director for seven years at Aid in Dover, Inc., a non-profit organization that ran preventative programs and an emergency shelter for unhoused youth. In this capacity, she successfully developed after-school programs for at-risk youth, including initiatives such as a homework help program, an all-girl mentoring group, a basketball program,



and a music program. Additionally, she showcased her financial acumen by managing general accounting activities, including payroll, invoicing, accounts payables, accounts receivables, and bank statement reconciliation in adherence to established accounting policies and procedures.

A 2010 graduate of the University of Phoenix with a master’s degree in business administration, Ms. Gutierrez also earned a bachelor’s degree in psychology from Wesley College in 2007.

Please join us in welcoming Lauren Gutierrez to our team! We look forward to working together to serve the residents of Kent County effectively.

Summer Holidays & Trash Collection Services

Independence Day Thursday, July 4

Trash Services, One Day Later

Labor Day Monday, September 2

Trash Services, One Day Later

First Major Hydrogen Company Expands IN CENTRAL DELAWARE

FFI Ionix, known for its expertise in hydrogen technologies, is set to expand as it transitions from its current 15,000-square-foot facility in Harrington to a much larger facility at 60 Starlifter Avenue in Dover. The new establishment will span 57,000 square feet, with 22,000 square feet dedicated solely to a cutting-edge laboratory facility. Fortescue's acquisition of Harrington-based Xergy, Inc. in 2021 sparked the beginning of FFI Ionix, synergizing the strengths of both entities.

Through a collaborative effort, the Kent Economic Partnership, Delaware Prosperity Partnership, and City of Dover have supported FFI Ionix's requirements throughout this two-year process. This expansion initiative not only secures the retention of 22 existing positions but also generates an additional 25 new jobs within Dover's economic landscape, backed by a capital investment of \$12 million by the company. In addition to the retention and creation of new jobs, FFI Ionix's expansion marks the first Central Delaware company to receive the Delaware Graduated Lab Space Grant.

FFI Ionix is set to occupy the last remaining space at the Kent County Aeropark, marking full occupancy to the former Sunroc building. With a diverse range of sectors such as warehousing, distribution, aviation, media, and now manufacturing lab space, the Aeropark stands as a thriving business park. Central Delaware experiences ongoing rapid expansion within its business parks, signifying sustained investment in the region. These companies committing to

long-term presence are not only making strong capital investments into the local economy but also generating lucrative employment opportunities for our community.

With the recent announcement of the selection of the Mid-Atlantic Clean Hydrogen Hub (MACH2) to receive approximately \$700 Million, a significant step has been taken towards establishing a Hydrogen Hub set to generate clean energy for Delaware, parts of New Jersey, and Pennsylvania. With prominent Central Delaware companies and institutions—including Chesapeake Utilities, DART, Delaware State University, and others—taking pivotal roles in the MACH2 initiative, Central Delaware is poised to emerge as a hub for clean energy manufacturing. The FFI Ionix expansion signifies merely the beginning of a transformative effort towards sustainability, offering wide-ranging advantages for the region and beyond.

Through their long-term presence and capital investments, companies like FFI Ionix demonstrate their unwavering commitment to fostering economic growth and creating valuable opportunities for the community. This underscores Kent County's reputation as an exceptional location for businesses to thrive, thanks to its supportive ecosystem, skilled workforce, and strategic partnerships. Such success is further facilitated by the support and strategic initiatives of organizations like the Kent Economic Partnership, dedicated to driving economic growth in Kent County through business attraction, retention, and expansion.



The picture above is from the Council on Development Finance meeting where FFI Ionix received the approval of the Graduated Lab Space Grant.

Employees of the Month

VANESSA L. FULKERSON

JANUARY 2024



Vanessa L. Fulkerson
Recorder of Deeds Office

Kent County Department Heads have selected VANESSA L. FULKERSON from the Recorder of Deeds Office as the JANUARY 2024 Employee of the Month.

Vanessa is a Deed Clerk II in the Kent County Recorder of Deeds Office and started with Kent County in February 2022 as a Deed Clerk I. She was promoted to a Deed Clerk II in October 2022. Before starting with the County, she worked as a Legal/Administrative Assistant with the Law Offices of Bonnie Benson. Prior to that, Vanessa worked as a Legal Assistant with Grady & Hampton, LLC.

Vanessa is responsible for the recordation

of all electronic property documents, accounting for 70% of the Deeds Office's work product. She played a crucial role in the recovery process of recording paper and electronic documents after connectivity was restored from last July's Network Intrusion. Because of Vanessa's strong work ethic and determination, she was able to process almost 2,000 electronic documents by August 30, resuming same day recording services and drawing praise from legal and lending communities.

According to Recorder of Deeds Eugenia Thornton "Thanks to Vanessa's dedication and professionalism, hundreds of Kent County citizens bought and sold their homes with less delay than expected and interest rates as promised. Vanessa is a shining example of "Serving Kent County with Pride."

Congratulations Vanessa on a job well done!

JOSHUA C. NORRIS

FEBRUARY 2024



Joshua C. Norris
Department of Public Safety

Kent County Department Heads have selected JOSHUA C. NORRIS from the Department of Public Safety as the FEBRUARY 2024 Employee of the Month.

Josh is a Dispatch Shift Supervisor in the Emergency Communications Division and started with Kent County in July 2007. Josh began as a Dispatcher I and was promoted to Dispatcher II in July 2011. Continually displaying his leadership skills, abilities, and growth through professional development, Josh has elevated through the ranks with his most recent promotion to the Dispatch Shift Supervisor.

Josh is responsible for upholding our Standard Operating Procedures (SOP) and actively participates in our Quality Assurance (QA) program for 911 calls. Notably, he has taken the initiative

to establish a formal QA program for the thorough review of incidents involving radio communication and Computer-Aided Dispatch (CAD) entries. Day in and day out, Josh leads his shift with dedication, consistently exceeding expectations.

Furthermore, Josh serves as an active Firefighter/EMT and recently received the Kent County Life Saving Award for his commendable actions during an incident while working with the Magnolia Fire Company.

According to Director of Public Safety, Chief Kevin Sipple, "Josh consistently sets an exemplary standard and willingly lends his support, particularly in areas where he identifies opportunities for enhancement, all the while fostering a positive demeanor. Noteworthy instances of this commitment include his prior involvement in training new staff members and his undertaking of the responsibility to modernize our extensive training program."

Congratulations Josh on a job well done!

GREGORY J. MANSFIELD

MARCH 2024



Gregory J. Mansfield
Department of Administration

Kent County Department Heads have selected GREGORY J. MANSFIELD from the Department of Administration as the MARCH 2024 Employee of the Month.

Greg is a Network Specialist in the Information Technology Office and started with Kent County in November 2015. Greg began as a Computer Support Technician I and was promoted to Computer Support Technician II in June 2018. Since the recent retirement of two lead positions in the IT Network staff, Greg has displayed a willingness to learn, excel, and become proficient in what Kent County requires to provide support and services to all departments.

Greg is responsible for network support resources for the WWTP,

as well as maintaining the network at the Public Safety building. He has been essential in coordinating the networking portion of upgrading our SCADA system with the SCADA Integrator and our network vendor by diving into a critical Kent County system that he had no previous knowledge about. Greg has gained a working knowledge of how the system was developed and how to support it in the future.

According to Information Technology Director, Joe Simmons, "Greg's position as Network Specialist I has changed in terms of everyday duties and aspects of our network environment, and he continues to rise to the occasion delivering optimal service and support. His ability to step into and perform some of the primary aspects of the Network Administrator position while managing maintenance support calls and multiple current duties and tasks is what makes him such a valuable team member."

Congratulations Greg on a job well done!

KENT COUNTY LEVY COURT, COMMUNITY SERVICES DEPARTMENT

Upcoming Programs and Activities for Recreation, Parks, and Libraries



Summer 2024

KENT COUNTY PARKS AND RECREATION & KENT COUNTY RECREATION CENTER

1683 New Burton Rd.
Dover, DE 19904

Office Hours:
Monday – Friday,
8:00 a.m. – 5:00 p.m.
Phone: 302-744-2495

Email:
ParksRec@KentCountyDE.gov
www.KentCountyDE.gov

Parks and Recreation Commission

Kevin Zimmerman, Chairman	4th District
John Stant III, Vice Chairman	2nd District
Walter Carroll	6th District
Ed Coker	1st District
James E. Long	5th District
Brian J. Michalski	At Large
Walter Waite, Jr.	3rd District

Mission Statement:

Our mission is to plan, promote and develop recreational facilities and activities consistent with the needs of all Kent County residents for now and the future.

Commission Goals:

1. To promote the health, welfare and safety of all recreational participants
2. To monitor recreational facilities and programs
3. To study and identify needed recreational facilities and services
4. To support the Park and Recreation Division in serving all Kent Countians
5. To fulfill responsibilities delegated by Kent County Levy Court under Article III of the Parks and Recreation Commission Bylaws
6. To protect and conserve natural resources
7. To promote an awareness of public recreational facilities in Kent County
8. To incorporate technological resources into the County recreational planning and delivery system
9. To promote and develop Greenways as recreational resources
10. To function as a recreational advocate on behalf of the population of Kent County
11. To work in conjunction with other agencies to enhance recreational resources
12. To expand recreational and leisure activities
13. To insure compliance with provisions for open space, preservation and management
14. To identify and recommend funding sources that support parks and recreation opportunities

Accepted by Kent County Levy Court 8/22/2000

ARTS & CRAFTS

BEGINNER & ADVANCED HAND CROCHET OR KNITTING DESIGN

Ages: 13+ Fees: \$65
Days: Tue Time: 5:30 – 7:30 p.m.
Sess: July 16 – July 30 AC#CROKNI716
SESS: AUG 6 – AUG 20 AC#CROKNI806

Kent County Administrative Complex, Room 126A, 555 Bay Rd, Dover. The beginner class will learn how to make a scarf & potholders, participants will keep all projects made. The advanced class will learn how to make their own projects. **(Please indicate on registration form whether you are a crocheter or knitter, beginner or advanced.)** Parents must stay if the child is under 18. Minimum of 3, maximum of 15. Instructor: Manh Nguyen, with over 40 years of teaching experience. **For a list of class supplies, please call Manh at 302-530-9525.**

BEGINNER/INTERMEDIATE BOBBIN LACE

Ages: 13+
Days: Tue Time: 6:00 – 9:00 p.m.
Sess: July 30 – Aug 20
Fee: \$51 (beginners) AC#BOBBINB730
\$41 (intermediate) AC#BOBBINI730

Kent County Administrative Complex, Room 221, 555 Bay Road, Dover. Welcome to the world of the 18th century cottage industry craft of h&m-made lace. Bobbin Lace will be made using pins on a lacemaking pillow with each thread on an individual bobbin. Stitches are created by crossing or twisting the bobbins. Participants will learn the beginning stitches of Torchon lace to create several bookmarks. Lacemaking equipment will be available to rent from the instructor. Prerequisite: Attended the beginner class or have basic knowledge. **(Must bring your own equipment.)** Minimum of 4, maximum of 6. **For a list of supplies and rental fees, call instructor Kim Czerwinski at 302-736-6336.**

BEYOND BOOKS BOUNTIFUL BALLOON BASH

Ages: 4-6 Fees: \$75
Days: Sat Time: 6:00 – 8:00 p.m.
Sess: June 1 – June 22 AC#BBBBB601

The Dover Art League, 21 W. Loockerman St, Dover. This fun & interactive class is designed to teach social-emotional skills through music & art resources. Each week friends will read stories, sing songs, play games, & most importantly, enjoy art projects (sometimes messy)! Snack & clean-up will also be a part of our time together. In the age of technology, it's a treat to be hands on with friends - enjoying one another, creating, & expressing ourselves. Students will learn the value of spending time with peers, showing kindness & respect to themselves & our shared space. Parents are encouraged to enjoy some time in surrounding restaurants & shops. Each class will conclude with a balloon dance party. All materials will be provided. Minimum of 5, Maximum of 10. Instructor: Ginny Jewell

CREATE YOUR OWN COMIC BOOK!

Ages: 8-12 Fees: \$75
Days: Wed Time: 4:00 – 6:00 p.m.
Sess: July 10 – July 24 AC#CYOCB710

The Dover Art League, 21 W. Loockerman St, Dover. Create Your Own Comic Book from start to finish! Throughout this course, participants will dive into the fundamentals of character design, exploring elements such as appearance, personality traits, & special abilities. But the adventure doesn't stop there! Once their characters are fully realized, students will craft an original storyline. They'll master the art of plot development, learning how to build suspense, create compelling conflicts, & weave together captivating narratives. From sketching out dynamic panels to adding vibrant colors & dialogue, students will learn essential techniques to transform their ideas into a real comic book! *All other materials will be provided. Minimum of 5, Maximum of 15. Instructor: Kevin Solomon

EXPLORING STAINED GLASS: A JOURNEY THROUGH COLOR & LIGHT

Ages: 16+ Fees: \$135
Days: Sun Time: 1:00 – 4:00 p.m.
Sess: July 7 – July 28 AC#ESG707

The Dover Art League, 21 W. Loockerman St, Dover. Are you looking for a new creative hobby? Do you prefer working with your hands? Are you distracted by shiny things? Here's your chance to learn a new medium & challenge your creativity with glass! Students will learn about PPE/safety, proper station cleanliness, proper glass cutting, grinding, foil, soldering, patina techniques, how to identify types of glass & tools as well as how to coordinate glass patterns. By the end of this class, we will have made a simple art deco sun-catcher with a newfound confidence in stained glass! There will be focus on getting clean solder lines, & beaded edges for stability & longevity, as well as decorative soldering. All materials will be provided. Minimum of 5, Maximum of 10. Instructor: Ali Ferracci



LANDSCAPE PHOTOGRAPHY WORKSHOP

Ages: 16+ Fees: \$80
Days: Sat, Sun, & Mon
Time: Sat 1:00 – 4:00 p.m., Sun 5:00 – 8:00 a.m., Mon 6:00 – 9:00 p.m.

***Sunday sunrise time may be adjusted**

Sess: June 29, June 30, & July 1
AC#LPW629

The Dover Art League, 21 W. Loockerman St, Dover. Learn the basics of landscape photography in your own backyard in beautiful Kent County Delaware. Go to multiple locations within Kent County to create lasting landscape images. This class includes daytime landscapes as well as sunrise. Learn to shoot at different times of the day & what you need to produce the best landscape photography with the gear you have. You will learn composition techniques, proper exposure for different times of the day, how to get sharp & focused images & brief explanation on exposure triangles. Day 1- Learning the basics of landscape work/Shooting on location Day 2- Location shooting (Sunrise) Day 3- Editing & processing *Locations will be discussed during first class.

*Equipment: DSLR interchangeable lens camera with manual mode, tripod, a couple different lenses is preferred but not necessary, neutral Density filters if you have them. Minimum of 5, Maximum of 15. Instructor: Jarred Knorr



LOG CABIN FOR BEGINNERS

Ages: 16+ Fee: \$78
Days: Tue Time: 5:00 – 8:00 p.m.
Sess: June 11 – July 9 AC#LCQUILT11

Delaware Sewing Center, Rodney Village Shopping Center, Dover. This class is designed for someone that wants to start quilting, or just need to brush up on quilting skills. Learn to rotary cut strips of fabric accurately. Then sew the strips into a log cabin quilt square. Add borders, machine quilt, & sew on the binding. WOO-HOO you have a Log Cabin Quilt. Minimum of 4, maximum of 6. A sewing machine in good working order is needed. Must purchase the Log cabin book. **For more information and a list of supplies, call instructor Crystal Sweeney at 302-674-9030**

ARTS & CRAFTS

MACRAME KEYCHAIN EXTRAVAGANZA

Ages: 10+ Fees: \$45
Days: Wed Time: 5:00 – 8:00 p.m.
Sess: July 24 AC#MKE724

The Dover Art League, 21 W. Lookerman St., Dover. Welcome to the Macramé Keychain Extravaganza! Join us for a fun-filled workshop where young crafters will embark on a creative journey to design & craft their very own unique keychains. Through the enchanting world of knotting techniques, participants will learn the art of macramé, turning simple cords into intricate patterns & delightful designs. Throughout the workshop, the instructor will be there to lend a helping hand, offering expert guidance & encouragement as participants bring their design visions to life. Design enhancements will be available to make sure each creation is special & unique! Whether it's a rainbow-inspired masterpiece or a whimsical creature adorning the keychain, every creation is sure to sparkle with creativity & charm! *All materials will be provided. Minimum of 5, Maximum of 12. Instructor: Charlese Phillips



PHOTOGRAPHY FOR BEGINNERS

Ages: 16+ Fees: \$100
Days: Sun Time: 10:00 a.m. – 12:00 noon
Sess: July 7 – Aug 11 AC#PFB707

The Dover Art League, 21 W. Lookerman St., Dover. Do you have a camera, but still use the auto settings? Do you want maximum control over your images to achieve exactly what you envision? Then this class is for you! In this course students will learn the basics of photography including exposure, aperture, shutter speed, basic editing, & more! Students will have the opportunity during class hours to get outside & practice the techniques they learn. All you need is a DSLR camera & a notebook! The editing portion will be taught via a projector, but students can bring their own laptop if they'd like. Minimum of 5, Maximum of 15. Instructor: Jarred Knorr

SEWING MADE EASY & FUN

Ages: 13+ Fee: \$65
Days: Mon Time: 5:30 - 7:30 p.m.
Sess: July 15 – July 29 AC#SEW715
SESS: AUG 5 – AUG 19 AC#SEW805

Kent County Administrative Complex, Room 126A, 555 Bay Rd, Dover. Participants will learn sewing machine basics: operation, connect fabric, sew on a button and make a button hole (if your machine has one). The class will also cover how to hem a skirt, pants, shorts, dress, tunnel elastic, make a tie belt and repair a garment (**supplies not included**). **Participants will need to bring their machine and instruction manual. Parent must stay if child is under 18.** Minimum of 3, maximum of 12. Instructor: Manh Nguyen, with over 40 years of teaching experience. **For a list of class supplies, please call Manh at 302-530-9525.**

T-SHIRT QUILTING

Ages: 16+ Fee: \$78
Days: Wed Time: 3:00 – 6:00 p.m.
Sess: July 17 – Aug 14 AC#TQUILT717

Delaware Sewing Center, Rodney Village Shopping Center, Dover. If you are like most people, you have a pile of treasured old T-shirts you just can't bear to throw away. This class is geared to turning your old clothes into lasting memories. Just think of a graduation gift, a lasting memory of a great vacation, or all those years of sports. Minimum of 4, maximum of 7. **Stop by the shop to pick up supply list or call Delaware Sewing Center at 302-674-9030.**



CAMPS

BASKETBALL CAMP

Ages: 6-16
Days: Mon – Fri Time: 9:00 a.m. – 3:00 p.m.
Sess: June 17 – June 21
Fee: \$135 AC#BBCAMP617
(no camp 6/19)
Sess: Aug 12 – Aug 16
Fee: \$150 AC#BBCAMP812

Kent County Recreation Center, 1683 New Burton Rd., Dover. Camp participants will learn the fundamentals of basketball through stations, competitions, & games. Stations will include fundamentals such as passing, shooting, rebounding, defense, & offensive moves. There will be daily competitions for Knockout, Hot-shot, Dribble Knockout, & Free Throws. During the day, campers will play 3 on 3 & 5 on 5 games. The instruction will be conducted by high school basketball coaches, current & former high school, & college basketball players. Bring a bag lunch each day. Includes T-shirt (please indicate size on registration form). Instructors: Tameka Williams

FIELD HOCKEY CAMP

Ages: 6-14 Fee: \$85
Days: Mon – Fri Time: 8:30 – 10:00 a.m.
Sess: July 8 – July 12 AC#FHCAMP708

Kent County Recreation Center Turf Field, 1683 New Burton Road Dover. Basic stick handling, dribbling & hitting skills will be taught. Campers will also learn field layout & player positioning. Camp will incorporate games & relays. Campers need to bring their own equipment, mouth guard & shin guards, water bottle & wear comfortable clothing. Minimum of 10, Maximum of 25. Instructor: Michelle Tucker, Head Coach Lake Forest High School.



CAMPS

BOY'S YOUTH LACROSSE CAMP

Ages: 9-13 Fee: \$60
Days: Mon & Tue Time: 5:30 - 7:00 p.m.
Sess: Aug 5 & Aug 6 AC#YLAXTR805

Kent County Recreation Center, Turf Field 1683 New Burton Road, Dover. This camp is designed to develop fundamental skills & techniques that will help prepare your game at the next level. Campers need to provide their own equipment (helmet, mouth piece, gloves, elbow/shoulder pads & stick).

Coaching Staff:

Anthony Edwards - Region 2019 College Coach of the Year / National Junior College Coaches Association President / 10-year college coach / Team captain for Wesley College & Catonsville Junior College.

John Coveleski - Delaware Lacrosse Hall of Fame/ 26 years of coaching college & high school lacrosse / started the lacrosse programs at Caesar Rodney High school & Delaware Tech. For more information, call Joseph Paugh at 302-744-2486.

YOUTH PICKLEBALL CAMP

Ages: 8-16 Fee: \$25
Days: Mon & Wed Time: 9:00 - 10:30 a.m.
Sess: Jun 24 & June 26 AC#YPICKCAMP624
Sess: July 15 & July 17 AC#YPICKCAMP715

Kent County Recreation Center, 1683 New Burton Rd, Dover. This camp is designed to introduce kids ages 8 - 16 to the sport of pickleball or improve the skills of those that already play. The camp will feature introductory skills, age-appropriate drills as well as learning the rules & scoring of the game. Participants should wear comfortable sneakers. Equipment will be provided but feel free to bring your own paddle if you have one. Minimum of 10, Maximum of 24. Instructors: Lynn Price.

YOUTH SUMMER SOCCER CAMP

Ages: 8-14 Fee: \$150
Days: Mon - Fri Time: 9:00 a.m. - 3:00 p.m.
Sess: June 17 - June 21 AC#CMPSOCCER617
Sess: July 15 - July 19 AC#CMPSOCCER715

Kent County Recreation Center, Turf Field 1683 New Burton Road, Dover. Designed for players of all levels who want to learn & improve their fundamental soccer skills in a fun & encouraging environment. Camp participants will learn these fundamentals of soccer through games & competitions. Please bring lunch, drinks, & snacks each day. Refrigeration will not be available so pack accordingly. Cleats & shin guards are required (bring a pair of clean indoor shoes/sneakers in case of bad weather).

EDUCATIONAL

BREATH WORK & SOUND BATH MEDITATION

Ages: 16+ Fee: \$30
Days: Wed Time: 7:00 - 8:00 p.m.
Sess: May 29 AC#SOUNDBATH529
Sess: July 10 AC#SOUNDBATH710
Sess: Aug 28 AC#SOUNDBATH828

Location TBD, Clayton. Combining the power of breath with healing sound, this class assists students in taking control of their stress response, sleep quality & energy levels regardless of age or health. Students will practice proper breathing techniques while listening to gentle tones designed to induce an almost immediate feeling of well-being. A guided meditation will accompany for part of the class. Bring a yoga mat/cushion or use one provided. Led by certified Breath Coach & Meditation Instructor Audra Littleton. Visit www.Find-Ur-Balance.com for more info. Minimum of 5, Maximum of 10.

EFT FOR EVERYTHING

Ages: 15 & up Fee: \$41
Days: Wed Hours: 6:30 - 8:30 p.m.
Sess: July 17 AC#EFT717

Kent County Levy Court, Room 221. The Emotional Freedom Technique (EFT), OR "Tapping", is the most influential and widely known energy psychology method in the world. When properly done, EFT reduces (or completely removes) any problem being addressed, often in less than twenty minutes. Participants will learn the tapping sequence and standard affirmations in order to benefit from EFT immediately. Class led by certified EFT practitioner, Audra Littleton. Visit www.Find-Ur-Balance.com for more information. Max of 10.

INTRODUCTION TO "EARTHING"

Ages: 16+ Fee: \$41
Days: Wed Time: 6:30 - 8:30 p.m.
Sess: July 31 AC#EARTHING731

Big Oak Park, Smyrna, Pavilion (rain or shine). Also known as "grounding", tens of thousands of testimonials prove this is so much more than a trend! In this hands-on workshop, students will learn the science behind the practice & discover why it rapidly decreases inflammation while improving blood flow, energy levels, sleep quality, & stress resistance, all by simply connecting to the planet's natural electric currents-even while indoors! Students will have an opportunity to test various connections using technology, & spend some quality time earthing, while being guided in some easy breath techniques. Take your health in your own hands this summer! Led by Breath & Wellness Coach, Audra Littleton. Visit www.Find-Ur-Balance.com for more information. Minimum of 5, Maximum of 20.

REIKI "1"

Ages: 16 & up Fee: \$74
Days: Wed Hours: 6:30 - 8:30 p.m.
Sess: Aug 7 & 14 AC#REIKI1807

Kent County Levy Court, Room 221. Reiki is a safe, simple, and natural form of energy medicine. It is a complete system for self-care that compliments traditional medical care and promotes the body's natural ability to heal. Participants will learn the Reiki hand positions and participate in practice exercises designed to be used as self-treatments, as well as for family and friends. Each participant receives traditional level 1 attunements, and a certificate. This class is eligible for 4 CE credits. For more information, call instructor Audra Littleton at 302-530-8220. 5 person min, 10 max.

REIKI "2"

Ages: 18 & up Fee: \$101
Days: Wed Hours: 6:30 - 8:30 p.m.
(one class on Mon)
Sess: June 12, 17, 26 AC#REIKI2612

Kent County Administrative Complex, Room 221, 555 Bay Road, Dover. (Prerequisite Reiki "1"). Reiki II expands on the foundation of Reiki I. At the completion of this class, students will be considered a Reiki Practitioner and be able to administer Reiki healing energy at a professional level, if they choose. We will discuss practitioner ethics and steps to establishing a Reiki practice. Students will also learn the first three Reiki symbols as well as techniques for distance healing. Level II attunements will enhance the ability to feel energy frequencies and improve their multi-sensory skills. Ample practice time is allowed so students may "learn by doing". Eligible for six CE credits. Led by RMT Audra Littleton, visit her website, www.Find-Ur-Balance.com for more info.



FITNESS

AQUA AEROBICS CARDIO BLAST

Ages: 18+ Fee: \$75
 Days: Tue & Thu Time: 6:00 - 7:00 p.m.
 Sess: June 18 - July 23 AC#FMMCAQ618
 (No Class 7/4)
 Sess: July 30 - Aug 29 AC#FMMCAQ730

Modern Maturity Center, Dover. Take advantage of water's natural resistance to get an aerobic & toning workout without the wear & tear on your joints. This program focuses on cardiovascular fitness & range of motion & is a great workout for seniors. Participants must bring their suit & towel. Minimum of 20, maximum of 25. Instructor: Betsy Gustafson, personal trainer, & fitness instructor with 30+ years of experience.

ZUMBA GOLD PLUS

Ages: 16+ Fee: \$65
 Days: Mon & Wed Time: 6:00-7:00 p.m.
 Sess: June 10 - July 24 AC#FZGP610
 (No Class 6/19)
 Sess: Aug 5 - Sep 16 AC#FZGP805
 (No Class 9/2)

Kent County Recreation Center, 1683 New Burton Road, Dover. Come join this fun & easy to follow Zumba class. This version of Zumba allows you to dance at your own pace. Incorporates verbal instruction in addition to hand cueing to further assist in the teaching process. This is a low impact dance party where you choose the intensity you want. You will groove to Latin, R&B, Oldies, Big B&, Rock, Dance Hall, Pop, & more. There is something for everyone & every fitness level. This is a no judgement zone, with tons of fun. Hope to see you there. Minimum of 10, Maximum of 25. Instructor: Denise Jackson



LEAGUES

BOYS HIGH SCHOOL BASKETBALL LEAGUE

Ages: 13 - 18 Fees: \$400
 (\$50 Early Bird Discount for registrations before Wed 5/8 at 5:00 p.m.)
 Days: Thu Time: 6:00, 7:00 & 8:00 p.m.
 Sess: May 23 - July 25 AC# HSBASKLG523
 (No Games: 6/6, 6/13, or 7/4)

Kent County Recreation Center, 1683 New Burton Rd, Dover. School teams only. League features a seven-week competitive basketball experience with a single elimination tournament the final week (top 6 teams make the tournament). Teams have the opportunity to reserve a half court for practice immediately prior to scheduled games. Games will be 20-minute halves with a running clock (2 timeouts per team per half, the game clock will be stopped the final minute of each half for in-bounding, fouls, & injuries) officiated by DIAA officials. Teams must provide game jerseys.

BOY'S HIGH SCHOOL LACROSSE LEAGUE

Ages: 13 - 18 Fee: \$87
 Days: Mon Time: 7:00 p.m.
 Sess: Jun 24 - July 29 AC#YBLAXLG624

Kent County Recreation Center, Turf Field 1683 New Burton Road, Dover. This pick-up league is designed to develop fundamental skills & techniques that will help prepare your game at the next level. All players will be placed on teams by the Coaching staff & will compete in games over the 6-week time frame. Players need to provide their own equipment (helmet, mouth piece, gloves, elbow/shoulder pads & stick). For more information, call Joseph Paugh at 302-744-2486.

CO-ED SUMMER SOFTBALL LEAGUE

Ages: 16+ Fee: \$475
 (\$50 Early Bird Discount for registrations before Wed 5/17 at 5:00 p.m.)
 Days: Tue & Thu Time: 6:00 p.m.
 Sess: June 4 - July 25 AC#COEDSOF604

Browns Branch County Park, Killens Pond Road, Harrington. 5-week regular season, 10 game season with single elimination playoffs to end the league. All teams make single elimination playoff, 1st & 2nd place trophies awarded. League will be ASA governed. Contact Brent Mollohan 302-744-2491 for more information.

CO-ED ADULT VOLLEYBALL LEAGUE

Ages: 16+ Fees: \$350
 (\$50 Early Bird Discount for registrations before 5/24 at 5:00 p.m.)
 Days: Mon Time: 6:00 - 9:00 p.m.
 Sess: June 10 - Aug 12 AC#ASUVBLG610

Kent County Recreation Center, 1683 New Burton Rd, Dover. Matches are best of 3, rally scoring, games are scored to 25. Regular season based on number of teams. The league concludes with single elimination playoffs. For more information call Jonathan Stewart 302-744-2489 or email at jonathan.stewart@kent-countyde.gov



LEAGUES

JR. NBA PRESEASON

Fees: \$50
(Includes T-shirt)
Ages: 7 – 9 AC#JRNBPREA904
Days: Mon & Wed Time: 6:00 – 7:00 p.m.
Ages: 10 – 12 AC#JRNBPREB904
Days: Mon & Wed Time: 7:00 – 8:00 p.m.
Sess: Sep 4 – Sep 30

Kent County Recreation Center, 1683 New Burton Rd, Dover. Players will take part in basketball skills development clinics that will teach fundamental basketball skills including ball-handling, shooting, rebounding, & passing. Players will rotate through skill development stations & participate in scrimmages to further develop skills. Minimum of 20, Maximum of 50 in each division. Includes a T-shirt



KYBL FREE AGENT SUMMER SERIES

Fees: \$40
Ages: 9-12 AC#KYBLFASSY626
Ages: 13-16 AC#KYBLFASSJ626
Days: Wed Time: 6:00 – 8:00 p.m.
Sess: June 26 – July 31
(No Games 7/3)

Kent County Recreation Center, 1683 New Burton Rd, Dover. Join us for an exciting & dynamic basketball league designed to keep youth engaged, active, & having a blast on the court! Our Kent Youth Basketball League (KYBL) Free Agent Summer Series offers a unique twist on traditional leagues by assigning players to new teams each week, fostering camaraderie, skill development, & a fun-filled atmosphere. This league focuses on fostering fundamental basketball skills in a supportive & encouraging environment. Participants receive guidance & coaching while experiencing a variety of playing styles. Each division can only accept 30 participants. Register today & be part of the action!

MEN'S SUMMER SOFTBALL LEAGUE

Ages: 16+ Fees: \$575
(\$50 Early Bird Discount for registrations before Fri 5/12 at 5:00 p.m.)
Days: Sun Time: 9:00 a.m. – 1:30 p.m.
Sess: June 2 – July 21 AC# MSSOFT602

Big Oak County Park, Big Oak Road, Smyrna. 6-week regular season double-header games with single elimination tournament to end the league. League will be ASA governed. For more information call Jonathan Stewart 302-744-2489 or email at Jonathan.stewart@kentcounty.de.gov.

PICKLEBALL LADDER LEAGUE

Ages: 18+ Fee: \$28/person
Days: Tue Time: 6:00 p.m.
Sess: June 11 AC#PBLEAG611

Kent County Recreation Center, 1683 New Burton Rd, Dover. League will play 6 weeks. Basic understanding of Pickleball rules & game play is necessary. Trophies awarded to 1st & 2nd place finishers.

YOUTH LACROSSE LEAGUE

Ages: 9 to 13 Fee: \$87
Days: Mon Time: 5:30 p.m.
Sess: Jun 24 – July 29 AC#YLAXLG624

Kent County Recreation Center, Turf Field 1683 New Burton Road, Dover. This pick-up league is designed to develop fundamental skills & techniques that will help prepare your game at the next level. All players will be placed on teams by the coaching staff & will compete in games over the 6-week time frame. Players need to provide their own equipment (helmet, mouth-piece, gloves, elbow/shoulder pads & stick). For more information, call Joseph Paugh at 302-744-2486.



MUSIC/DANCE

KCRC BEGINNER SOUL LINE DANCING

Ages: 16+ Fee: \$41
Days: Tue Time: 6:30 – 7:30 p.m.
Sess: Apr 30 – May 28 AC#KCRCSLD430
Sess: June 4 – July 2 AC#KCRCSLD604
Sess: July 9 – Aug 6 AC#KCRCSLD709
Sess: Aug 13 – Sep 10 AC#KCRCSLD813

Kent County Recreation Center, Multipurpose Rm, Dover. Looking for a great way to burn calories, meet new people, & improve your coordination while enhancing your dance moves? Well, look no further; Soul Line Dancing is for you. Come out & join the fun at our beginner level classes as you learn popular dances such as the Electric Slide, Wobble, Cupid Shuffle, Uptown Funk, & many more. Instructors: Chuck & Kelly Cooper C & K Soul Line Dancing Minimum of 10, Maximum of 25.



SPORTS INSTRUCTION

BEGINNER PICKLEBALL CLASS

Ages: 16+ Fee: \$65
Days: Tue Time: 8:00 – 10:00 a.m.
Sess: June 4 – July 2 AC#PICKBEG604
(No Class 6/18)
Sess: July 9 – July 30 AC#PICKBEG709

Kent County Recreation Center, 1683 New Burton Rd., Dover. This class is for beginners only. Pickleball is designed for all skill & age levels & is very easy to learn. Knowledge of the game is not necessary. Basic drills, skills & rules of the game will be taught. Our indoor courts will make your Pickleball experience much more memorable. Minimum of 4, Maximum of 14.



DUTCH 4V4 SOCCER

Days: Wed Fee: \$60
Age Divisions:
Ages 8-10 Time: 6:00 – 7:00 p.m.
Ages 11-14 Time: 7:00 – 8:00 p.m.
Sess: June 26 - Aug 7 AC#DUTCH626
(No Games 7/3)

Kent County Recreation Center, 1683 New Burton Road, Dover. Players will arrive & be placed into teams on a small-sized field. Each game will last for approx. 20 mins. & rotate until they play each team. Players of all skill levels will come together & play with & against different players each week. Minimum of 10, Maximum of 40.

INTERMEDIATE/ADVANCED PICKLEBALL CLASS

Ages: 16+ Fee: \$65
Days: Thu Time: 8:00 – 10:00 a.m.
Sess: July 11 – Aug 1 AC#APICKLINA711

Kent County Recreation Center, 1683 New Burton Rd., Dover. Are you ready to take your pickleball game to the next level? This course will cover intermediate-to-advanced pickleball skills such as: dinking, volleying, third shot drop, reset, lob, defend lob. Tactics will be taught for doubles play: serve, return of serve, transition to non-volley zone, going on attack at the non-volley zone. Minimum of 4, Maximum of 24.

INTERMEDIATE PICKLEBALL CLASS

Ages: 16 & up Fee: \$65
Days: Tue or Thu Time: 10:30 a.m. – 12:30 p.m.
Sess: Tue, June 4 – July 2 AC#PICKINT604
Sess: Tue, July 9 – July 30 AC#PICKINT709
Sess: Thu, July 11 – Aug 1 AC#PICKINT711
(No class 6/18/24).

Kent County Recreation Center, 1683 New Burton Rd., Dover. Some previous experience of Pickleball is necessary. This class is designed for individuals who want to exp& their knowledge & skills of the game. Serving, positioning, lob shots, dinking are just some of the skills that will be taught during this class. Minimum of 12, Maximum of 24.

TINY TOT SOCCER - PARENT-CHILD

Ages: 2-4 Fee: \$40
Days: Wed Time: 5:00 – 5:30 p.m.
Sess: June 26 – Aug 7 AC#TINYTOTS626
(No Class 7/3)

Kent County Recreation Center, 1683 New Burton Road, Dover. This is an introductory class to develop the fundamental skills on how to play soccer. Players will receive guidance from a licensed coach following a 6-week curriculum. Parents will lead their child through the practices. The main goal is to have fun! Must have cleats or clean sneakers. Minimum of 10, Maximum of 20.

TOT SOCCER SPORT INSTRUCTION

Ages: 4-6 Fee: \$50
Days: Wed Time: 5:00 – 5:55 p.m.
Sess: June 26 – Aug 7 AC#TSOCRC626
(No Class 7/3)

Kent County Recreation Center, 1683 New Burton Road, Dover. This is an introductory class to develop the fundamental skills on how to play soccer. Players will receive training from licensed coaches following a 7-week curriculum. The main goal is to have fun! We will meet outside on the turf field, must have cleats or clean sneakers, & shin guards. Minimum of 10, Maximum of 60.

YOUTH SOCCER SPORT INSTRUCTION

Ages: 7-11 Fee: \$55
Days: Wed Time: 6:00 – 6:55 p.m.
Sess: June 26 – Aug 7 AC#YSOCRC626
(No Class 7/3)

Kent County Recreation Center, 1683 New Burton Road, Dover. This is an introductory class to develop the fundamental skills on how to play soccer. Players will receive training from licensed coaches following a 7-week curriculum. The main goal is to have fun! We will meet outside on the turf field, must have cleats or clean sneakers, & shin guards. Minimum of 10, Maximum of 60.



REGISTRATION PROCEDURES

• Registration will be accepted through the mail, in-person or on-line on a first-come, first-served basis. **NO PHONE IN REGISTRATION WILL BE ACCEPTED.** Cost of activity must be paid in full when registering except when stated differently. Please follow registration procedures listed below.

ONLINE REGISTRATION

Online Registration catalog can be accessed via secure.rec1.com/DE/kent-county-de/catalog. MasterCard, Visa and Discover Card **payments are processed through Authorize.net (which will read Kent County Levy Court on statement);** however, refunds must be processed through Kent County Parks and Recreation; allow up to 2 weeks for processing. All other refund policies apply.

CREDIT CARD USE POLICY

Kent County Parks and Recreation cares about the safety of your credit card information. We will no longer accept mailed or phoned in credit card payments. Credit card payments (Visa, MasterCard, Discover) can be made via our online registration catalog (CivicRec). Kent County Parks and Recreation can only accept credit card payment by authorized account holder as displayed on the card.

PROGRAM ACCOMMODATIONS

The Kent County Parks and Recreation Division invites people with and without disabilities to enjoy our programs, parks, and facilities. It is the policy of the Kent County Levy Court that all programs be accessible to all Qualified Handicapped Individuals as provided in Section 504 of the Rehabilitation Act of 1973. If you or the person(s) you are registering need modification for your program of interest, please contact Mike Rigby at 302-744-2495 or email at michael.rigby@KentCountyDE.gov before registering to discuss this matter.

TEXT MESSAGE NOTIFICATION

Through our registration software vendor, CivicRec, we have the capabilities of sending text message notifications directly to your mobile phone. The text message notification system would only be used for the program you are currently participating in and relate only to important messages such as cancellations, changes to schedule, or other necessary updates. In order to receive the text message notifications, you must submit your mobile carrier name when signing up for an account. If you have any questions regarding this helpful program, please call our office.

REFUND POLICY

Registration fees for recreation programs/activities must be paid in advance and shall be refunded in full to the payer of record if the County cancels the program/activity. If a participant cancels his/her participation in a program at least **five (5) days** prior to the first scheduled day, a full refund shall be paid less a **\$5** processing fee pursuant to County ordinance. Refunds will not be given for any other reason.

GENERAL INFORMATION

- Classes and activities are subject to cancellation for any reasonable cause.
- For weather and last minute cancellation information, please view our website at kentcountyde.gov/home and facebook.com/KentCountyParksandRec. Timely program cancellation notifications will be done by email or text notification from Staff.
- Please make sure that the instructor is present before dropping your child off at a program
- Arrive to pick up your child at least five minutes before the program's scheduled closing. Failure to pick up your child on time may result in expulsion from the program.
- A child may be expelled from a program with no refund after notifying parent of disciplinary problems.
- The Department may photograph programs and participants for publicity purposes, such as the brochure, facebook, twitter, etc.
- The Department has the right to adjust any of the program details in the brochure including fees, locations, instructors, times, days and starting dates.

WAIVER AND RELEASE OF LIABILITY AND INDEMNITY AGREEMENT

I hereby acknowledge that in using the facilities, programs and equipment of Kent County Parks and Recreation, I do so entirely at my own risk and I assume the risk of any injury and/or damage while engaging in any physical exercise or activity or use of any facility on the premises. This assumption of the risk includes, without limitation, my use of the gymnasium, athletic courts, lobby, hallways, athletic fields, parks, sidewalk, parking lot, seating, or any equipment in the facility/park. I further agree to assume the risk in participating in any activity, class, program, instruction, or any event sponsored by Kent County Parks and Recreation (Kent County Levy Court).

By executing this Agreement, I HEREBY WAIVE, RELEASE AND FOREVER DISCHARGE, Kent County Levy Court and its past, present and future administrators, partners, employees, insureds, assigns, agents, and representatives in their personal and professional capacities (collectively "Kent County Parks and Recreation"), from all claims, demands, injuries, damages, actions or causes of action, and from all acts of active or passive negligence on the part of such entity, its servants, agents, or employees of any nature whatsoever, including attorneys' fees and costs arising out of or connection with the aforementioned activities. I further agree to indemnify and hold harmless Kent County Levy Court from any claims, demands, injuries, damages, actions or causes of action, loss, liability, damage or cost which Kent County Levy Court may incur due to my presence at or use of the facility. I further agree that the foregoing warranty, waiver and indemnity agreement is intended to be as broad and inclusive as permitted by the law of the State of Delaware and that if any portion is deemed to be invalid, it is expressly agreed that the remaining terms shall remain in full legal force and effect.



KENT COUNTY PUBLIC LIBRARY

497 S. Red Haven Lane, Dover | 302-744-1919



SUMMER 2024 PROGRAMS & EVENTS

All programs are free, open to the public, and held at the Kent County Public Library, located at 497 S. Red Haven Ln., Dover unless stated differently. **Preregistration is required as noted.** Stop by the circulation desk or call (302) 744-1919 to register. You can also register online at www.tinyurl.com/KCPLcalendar (Parent or other responsible adult must be present in the library, including during programs for any child/youth under the age of 16.)

Kent County Public Library reserves the right to adjust program dates, times, enrollment maximums and program/event cancellations.

It is the policy of the Kent County Levy Court that all programs be accessible to all qualified handicapped individuals as provided in Section 504 of the Rehabilitation Act of 1973. If you, or the person(s) you are registering need reasonable accommodation for your program of interest, please contact the Kent County Public Library before registering to discuss the matter with the program coordinator(s).

The library may photograph programs and participants for publicity purposes, including posting to social media sites.

Kent County Public Library and Mobile Library will be closed May 27, June 19, July 4 and September 2.



ADVENTURE BEGINS AT YOUR LIBRARY 2024 KCPL Summer Reading Program

June 1 – August 14

All Ages

Children, teens and adults can earn free books, free ice cream tokens and other incentives/prizes simply by reading over the summer. **We've moved completely online!** Register and track your progress at <https://kentcounty.beanstack.org>.

ALL AGES PROGRAMS

All programs are free, open to the public, and held at the Kent County Public Library, located at 497 S. Red Haven Ln., Dover unless stated differently. **Preregistration is required as noted.** Stop by the circulation desk or call (302) 744-1919 to register. You can also register online at www.tinyurl.com/KCPLcalendar (Parent or other responsible adult must be present in the library, including during programs for any child/youth under the age of 16.)

MINI ADVENTURE DIORAMA CONTEST

Submissions accepted: June 1-15

Display: June 17 – July 1

Create a diorama featuring a mini adventure using your own materials. Dioramas may not be longer/larger than a standard shoebox (13.25" long x 10" wide x 5" deep). Please include your name, phone number/email address, and a brief title/description of your diorama. *Library cannot supply shoeboxes or craft materials. Please do not include food items in the construction of your diorama.*

PUZZLE & BOARD GAME SWAP

Saturday & Sunday, June 29 & 30 – 1:30 – 3:30 p.m.

Bring in your gently used, complete boxed jigsaw puzzles and board games to Kent County Public Library during normal library business hours between June 9 – June 28. Staff will record your name and the number of puzzles/games that you bring in. On the day(s) of the swap, you will receive voucher(s) to select the same number of puzzles/games from the accumulated donations. *We cannot accept donated puzzles or board games on the designated days of the swap (June 29 & 30).* Please do not put donated puzzles/games in the outside book return.

KCPL TINY ART GALLERY

Submissions accepted: June 22 – July 18

Display: July 20 – August 2

All ages. Create a tiny painting – maximum size 6" x 6" – for our special exhibition which will be shown in KCPL's display case. Please keep the subject artwork "family friendly." Paintings may be dropped off at the library during normal business hours, along with a 3" x 5" card including the artist's name and contact information. Please collect your artwork between August 3 – August 15. (All unclaimed artwork will become the property of Kent County Public Library.) *Library cannot supply canvases or art materials.*



KENT COUNTY PUBLIC LIBRARY

497 S. Red Haven Lane, Dover | 302-744-1919



“ADVENTURE” MOVIES

Fridays – 3:30 p.m.

Kick-off your summer weekends with free “adventure” films at KCPL on our jumbo indoor screen. Limited space; **preregistration for each movie is required.** (If fewer than 10 people are preregistered by the Wednesday prior to each screening, the movie will be canceled for that week.) Parents: Please note film ratings and run times before registering.

June 7 – *Raiders of the Lost Ark* (1981; rated PG; 1 hr., 55 min.)

June 14 – *Treasure Planet* (2002; rated PG; 1 hr., 35 min.)

June 21 – *Jumanji* (1995; rated PG; 1 hr., 44 min.)

June 28 – *Honey, I Shrunk the Kids* (1989; rated PG; 1 hr., 30 min.)

July 5 – *Labyrinth* (1986; rated PG; 1 hr., 41 min.)

July 12 – *Bedknobs & Broomsticks* (1971; rated G; 1 hr., 57 min.)

July 19 – *Rio* (2011; rated PG; 1 hr., 36 min.)

July 26 – *White Fang* (1991; rated PG; 1 hr., 45 min.)

August 2 – *Back to the Future* (1985; rated PG; 1 hr. 56 min.)

August 9 – *Pirates of the Caribbean: Curse of the Black Pearl* (2003; rated PG13; 2 hr., 23 min.)

August 16 – *Chitty Chitty Bang Bang* (1968; rated G; 2 hr., 24 min.)

August 23 – *Pete’s Dragon* (1977; rated G; 2 hr., 8 min.)

CHILDRENS/FAMILY PROGRAMS

All programs are free, open to the public, and held at the Kent County Public Library, located at 497 S. Red Haven Ln., Dover unless stated differently. **Preregistration is required as noted.** Stop by the circulation desk or call (302) 744-1919 to register. You can also register online at www.tinyurl.com/KCPLcalendar (Parent or other responsible adult must be present in the library, including during programs for any child/youth under the age of 16.)

STORY!TIME

Thursdays – 10:00 a.m.

Preschoolers (age 6 and under), and their accompanying parent/guardian are invited to join us every Thursday for stories, songs, crafts and more – a different theme each week. (For groups of 5 or more, please give advance notice of your visit.)

TOUCH-A-TRUCK: BIG TRUCKS & VEHICLES

Wednesdays, 10:00 a.m.

(No program June 19 due to holiday.)

This hands-on event is the perfect opportunity for children to see, touch, interact with, and learn about a variety of vehicles, as well as meet drivers and some local first responders! Participating children will receive a take-and-make craft kit (while supplies last). In case of inclement weather, the program will be canceled for the day – no rain date. (Vehicles will be located in the library parking lot between the pond and our atrium.)

June 5 – Kent County Mobile Library

June 12 – Tractor trailer

June 26 – Delaware State Trooper

July 3 – Felton Fire Co. truck

July 10 – Antique Tractor Association

July 17 – DelDOT dump truck

July 24 – First State Crane

July 31 – Earthborne Construction vehicle

August 7 – Dawson’s School Bus

PAWS FOR READING

Thursdays, June 6 & 20, July 18, August 1 & 15, September 5 & 19 – 6:30 p.m.

(No program July 4 due to holiday.)

Bring your child to the library to read aloud for 10 minutes to a friendly therapy dog provided by PAWS for People. Studies have shown that reading aloud to animals can actually help children improve both their reading skills and confidence. This is a great opportunity for beginning, reluctant, and even beginning English learners to practice in a non-judgmental environment. Teens and adults are welcome to read too! One reader per dog, per 10-minute reading session. First come, first served.

HAPPY CAMPERS

Fridays, July 12, 19, 26, August 2, 9 & 16 – 10:00 – 11:00 a.m.

Program held off-site at Brecknock County Park, 80 Old Camden Rd., Camden.

Designed for ages 9 and under. Visit the KCPL Mobile Library for fun, stories and activities/crafts (while they last). Program meets rain or shine.

“ADVENTURE” WITH DASEF

Thursday, July 11 – 6:30 p.m.

Designed for ages 7 – 11. Blast off on an astronomical adventure with an educator from the Delaware Aerospace Education Foundation. Limited space; **preregistration is required.** (Program sponsored by Delaware Division of Libraries.)



KENT COUNTY PUBLIC LIBRARY

497 S. Red Haven Lane, Dover | 302-744-1919



SKETCH WITH JEFF

Wednesday, July 17 – 6:30 p.m.

Ages 3-6. Watch characters come to life as storyteller Jeff Hopkins illustrates and narrates engaging tales for young children. Limited space; **preregistration is required.** (Program sponsored by Delaware Division of Libraries.)

REPTILE WONDERS

Sunday, July 28 – 2:00 p.m.

Join Reptile Wonders, “The Nature Center on the Go,” for an interactive program on reptiles featuring live snakes, lizards, tortoises and turtles from around the world. Limited seating; first come, first served.

SMOKEY BEAR READING CHALLENGE

Smokey Bear, the spokes-mascot for the longest running ad campaign in America, turns 80 this summer! When your child, age 4-10, registers online for the Summer Reading Program (beginning June 1) at www.kentcounty.beanstack.org be sure to select this additional challenge which will engage youth in reading about wildfire prevention, forests, and natural resource careers while they explore their local environment!

STORY!TIME VISIT WITH SMOKEY BEAR

Thursday, June 27 – 10:00 a.m.

Children ages 6 and under, along with their accompanying adult(s), are invited to join us for a special visit from Smokey Bear, with stories about nature and our environment -- and to remind us that “Only you can prevent forest fires.” (For groups of 5 or more, please give advance notice of your visit.)

TWEEN/TEEN PROGRAMS

All programs are free, open to the public, and held at the Kent County Public Library, located at 497 S. Red Haven Ln., Dover unless stated differently. **Preregistration is required as noted.** Stop by the circulation desk or call (302) 744-1919 to register. You can also register online at www.tinyurl.com/KCPLcalendar (Parent or other responsible adult must be present in the library, including during programs for any child/youth under the age of 16.)

DELAWARE ANIME SOCIETY

Saturdays, July 13, August 10 – 1:00 – 4:00 p.m.

(No meeting in June.)

Ages 13 and up (firm). The Delaware Anime Society is for those with an interest in Japanese anime (animation), manga (graphic novels), cosplay, music and pop culture to meet in a fun and relaxed atmosphere.

KCPL TEEN FORUM

Open to ages 13 – 17. We’ve started a teen book club on Goodreads.com that allows users to respond to or post polls, pictures, library events and discussion threads. This is a fun way to take part in a book club on your own schedule. Check it out at: <https://www.goodreads.com/group/show/1234186-kcpl-teen-forum>

SOLVING RUBIK’S

Tuesday, July 9 – 6:30 p.m.

Ages 13 and up. Rubik’s puzzles come in all shapes and sizes. Learn how to master these challenging puzzles and the benefits of solving them. All registered, attending participants will receive a puzzle to keep. Limited seating; **preregistration is required.** Presenter: Sadie Wilson.

See “Adult Programs” for other age-appropriate programs/events.

ADULT PROGRAMS

All programs are free, open to the public, and held at the Kent County Public Library, located at 497 S. Red Haven Ln., Dover unless stated differently. **Preregistration is required as noted.** Stop by the circulation desk or call (302) 744-1919 to register. You can also register online at www.tinyurl.com/KCPLcalendar

BOOKED FOR LUNCH

Mondays, June 3, July 1, August 5 – 12:30 p.m.

Ages 16 and up. Bring your own brown bag lunch and discuss what you are currently reading with the group – no assigned book.

ARTS & LETTERS BOOK CLUB

Wednesdays, June 5, July 3, August 7 – 12:30 p.m.

Ages 16 and up. Fiction and non-fiction books related to the various arts and world cultures.

June 5 – *Klara and the Sun* (Kazuo Ishiguro)

July 3 – *Chesapeake Requiem: A Year with the Watermen of Vanishing Tangier Island* (Earl Swift)

August 7 – *The Golden Hour* (Beatriz Williams)

“MOTHER GOOSE:” WHAT’S THE STORY?

Tuesday, June 18 – 6:30 p.m.

Ages 16 and up. The popularity of Mother Goose goes farther than nonsensical fun – it actually helps children with speech, words and later appreciation of literary works. Who was the real Mother Goose? What does Mother Goose symbolize? Learn some interesting facts about Mother Goose with presenter Catherine Michalski. Limited space; **preregistration required.**



KENT COUNTY PUBLIC LIBRARY

497 S. Red Haven Lane, Dover | 302-744-1919



KENT COUNTY MOBILE LIBRARY SCHEDULE

“The Friendly Library on the Highway”

<https://www.facebook.com/groups/134838331244737>

The Kent County Division of Libraries operates a self-contained mobile library unit that makes weekly stops throughout Kent County.

In addition to books and audio/visual materials to check out, you can also sign-up for a library card, register for library programs and/or KCPL’s Summer Reading program, pick-up items placed on hold, return library materials, use one of our public access laptops, enjoy limited printing services and/or take advantage of our free public wi-fi hotspot.

SUMMER 2024 SCHEDULE

(Effective June 1 – August 31)

MONDAY	9:00 – 10:00 a.m. 10:30 – 11:15 a.m. 11:45 a.m. – 12:30 p.m. 2:00 – 3:00 p.m.	DELAWARE VETERAN'S HOME FREDERICA FIRE HALL FELTON FIRE HALL DAFB PLAYGROUND
TUESDAY	9:00 – 9:45 a.m. 10:15 – 11:00 a.m. 12:30 – 1:30 p.m. 2:00 – 3:30 p.m.	HARTLY FIRE HALL BYLER'S COUNTRY STORE (DOVER) WESTMINSTER VILLAGE (MAIN ENTRANCE) MARYDEL FIRE HALL
WEDNESDAY <i>Begins June 12</i>	9:00 – 9:45 a.m. 10:30 – 11:15 a.m. 12:45 – 2:45 p.m. 3:15 – 4:00 p.m.	BOWERS BEACH (PUBLIC MUNICIPAL LOT) KENT COUNTY ADMINISTRATIVE COMPLEX TBA CHESWOLD FIRE HALL
THURSDAY	9:00 – 10:30 a.m. 11:00 a.m. – 12:00 p.m. 1:30 – 2:15 p.m. 2:30 – 4:30 p.m.	CALVARY CHRISTIAN ACADEMY TBA KENT COUNTY RECREATION CENTER TRE SORELLE ICE CREAM PARLOR (WYOMING)
FRIDAY <i>July 12 – August 16</i>	10:00 – 11:00 a.m.	BRECKNOCK COUNTY PARK <i>(SEE "HAPPY CAMPERS" UNDER CHILDREN'S PROGRAMS FOR MORE INFORMATION.)</i>



FRIENDS OF KENT COUNTY PUBLIC LIBRARY

<https://www.facebook.com/groups/kcplfriends>

The Friends of Kent County Public Library is a non-profit organization made up of the library’s greatest supporters, advocates, volunteers, fundraisers, and educators. June is the FOL’s traditional membership drive. We hope you will consider joining this outstanding organization. Membership applications are available at the KCPL circulation desk.

BOOK DONATIONS

June 1-5, July 1-3 & 5, August 1-5

The Friends of Kent County Public Library accept donations of clean, gently used boxed books and/or DVD/blu-ray disks the **first 5 days** of each month during normal library business hours – no exceptions. *(Limit of 10 banker boxes per family/per month.)* Receipts provided upon request at time of drop-off. (A copy of our complete donation policy is available at the KCPL circulation desk.)



KENT COUNTY PUBLIC LIBRARY

497 S. Red Haven Lane, Dover | 302-744-1919



These programs are provided through the generous support of the Friends of Kent County Public Library:

ROBIN HOOD – REHOBOTH SUMMER CHILDREN’S THEATRE

Sunday, August 4 – 2:00 p.m.

Robin and his Merry Men will spend a fun-filled afternoon dodging the Sheriff of Nottingham and his bumbling deputy. Two actors play all the characters in an energetic, imaginative (and humorous) 45-minute production designed for family audiences of all ages. Limited seating; first come, first served.

KRISS AND HOLLY’S LIBRARY ADVENTURE

Thursday, August 15 – 6:30 p.m.

Kriss and Holly are Delaware’s newest storytelling duo! Enjoy an interactive, exciting event that wraps up KCPL’s “Adventure Begins at Your Library” Summer Reading Program. Limited seating; first come, first served.

DIAL-A-STORY: (302) 741-4171

Call anytime – from anywhere -- for stories, kid-friendly jokes, songs and more! No library card needed. Content updated regularly. Best of all – it’s completely FREE!

4TH ANNUAL FRIENDS OF KENT COUNTY PUBLIC LIBRARY RODS FOR READING CAR SHOW

Saturday, August 31 – 9:00 a.m. - 3:00 p.m.

**G&R Campground,
4075 Gun & Rod Club Rd, Houston, DE**

Come out enjoy a day of hot rides, vendors, food concessions and more to benefit the Friends of Kent County Public Library.

Show registration is \$15 per car (cash only). Spectator/campground entry is free. In addition to the car show, there will also be a 50/50 raffle, gift basket raffle, silent auction and used book sale. Limited vendor space available.

For more information on registration, vendor pricing, or other show inquiries, please contact Carolina Cote at (302) 744-1919.

This event is a fundraiser for the Friends of Kent County Public Library, a 501(c)(3) non-profit.



GENERAL PARK RULES

1. Drugs, alcoholic beverages, and weapons are prohibited.
2. Audio devices, public address systems, and musical instruments are prohibited.
3. Motor vehicles restricted to designated parking areas only.
4. No littering, all parks are “carry-in, carry-out” facilities.
5. Lewd behavior and obscene language is prohibited.
6. No solicitation or vending without official Kent County permit.
7. No person shall harm any animal, vegetation or structure.
8. Dogs must be on a connecting leash and not pose a threat to any person.
9. No auto repair or maintenance activities in parking areas.
10. Use of metal detectors and the removal of antiquities are prohibited.
11. Organized team and league practice by official Kent County permit only.
12. Use of park and parking lots is restricted to daylight hours only.
13. No golf or equestrian activities.
14. Commercial photography is prohibited.
15. No open fires.
16. All persons using park facilities do so at their own risk.
17. No water activities unless permitted.

For specific park rules, please call the Parks and Recreation Office.

Kent County Park Facility Chart	Brecknock	Browns Branch	Big Oak	Lebanon Landing	Tidbury Creek	Kesselring	Hunn Nature
Location:	80 Old Camden Rd, Camden	1415 Killens Pond Rd, Harrington	417 Big Oak Rd, Smyrna	1400 Sorghum Mill Rd, Dover	2233 South State Street, Dover	1683 New Burton Rd, Dover	1624 Sorghum Mill Rd, Dover
Public Restroom	√	√	√			√	
Playground	√	√	√		√		
Horseshoe Pits	√	√					
Nature Trail	√	√			√		√
Walking Trail	√	√	√			√	√
Sand Volleyball	√	√					
Pavilion	√		√		√		
Softball Fields	√	√	√				
Multi-Purpose Fields	√	√	√			√	
Picnic Area	√	√	√	√	√		
Outdoor Grill	√	√	√		√		
Nature Center	√						
Fitness Area	√	√	√				
Bike Rack	√	√	√	√	√	√	
Field Rentals	√	√	√			√	
Stage	√						
Fishing Pond					√		
Dog Park					√		
Fishing Pier				√			
Boat Ramp				√			
Recreation Center						√	

PAVILION USE GUIDELINES

Pavilions are intended for general public use with the following restrictions:

1. No individual or group may hold, reserve, rope off, or otherwise take up more space/tables than needed AT THE TIME OF OCCUPATION.
2. No individual or group may require current users to leave/vacate the pavilion.
3. Decorations (balloons, table cloth, streamers, signs, etc.) for any gathering are prohibited.
4. Any Kent County Co-sponsored Event will be posted with specific date of event for public notice prior to the event.
5. All park facilities are “carry -in, carry-out” facilities. Please remove all trash upon your departure.
6. Amplified music (boom boxes, DJ services, PA systems, etc.) are prohibited.

Questions? Please call the Parks and Recreation Office at 302-744-2495.

DROP IN PUNCH CARD

All drop-in activities at the Kent County Recreation Center require a valid “Drop-In Punch Card” to participate. The \$20 punch card is good for 10 single drop-in activity sessions (\$2 per session) such as basketball, pickleball, soccer, volleyball, etc. (Refer to posted schedule on the website, Facebook and Office for times.) If you are pre-registered for a fee based program you do not need a drop-in punch card for those programs.

HOW TO PURCHASE

Punch Cards may be purchased in person at the Kent County Recreation Center:

Regular Business Hours – Monday through Friday, 8:00 a.m. to 5:00 p.m. using Cash or Credit Card ONLY.

Non Business Hours – Monday through Friday after 5:00 p.m. and Weekends – subject to the following restriction; limit of 2 per purchaser, CASH ONLY (no bills greater than \$20 will be accepted.)

Registration form must be filled out completely with each purchase.

ADDITIONAL INFORMATION

Cards are not available for online purchase, no refunds or exchanges, lost or stolen cards will not be replaced. You may use your card for guests or groups, as long as there are enough punches available.



Kent County Parks & Recreation

FREE AGENT SUMMER SERIES

WEDNESDAY NIGHTS
6-8 PM

KYBL FREE AGENT SUMMER SERIES FEATURES

\$40

Ages 9 - 12 AND 13 - 16

- NEW TEAMS DRAFTED EACH WEEK
- UP TO 5 GAMES PER WEEK
- GAMES SUPERVISED BY COACHES

SCAN TO REGISTER



SCAN ME



Call: 302-744-2495

For More Information or to Register:

www.co.kent.de.us/parks-recreation.aspx

Email: ParksRec@co.kent.de.us



KENT COUNTY PARKS & RECREATION

SUMMER YOUTH SOCCER CAMPS



Session 1: Monday June 17 – Friday June 21
Session 2: Monday July 15 – Friday July 19

9:00 AM –
3:00 PM

\$150.00

Ages
8-14

Designed for players of all levels who want to learn and improve their fundamental soccer skills in a fun and encouraging environment. Camp participants will learn these fundamentals of soccer through games and competitions.

302-744-2495

parksrec@co.kent.de.us

#KCRCLetsPlay



KENT COUNTY PARKS AND RECREATION
1683 NEW BURTON ROAD
DOVER, DE 19904

PRSRT STD
U.S. POSTAGE
PAID
DOVER, DE
PERMIT #23

ECRWSS
POSTAL CUSTOMER

2024 SUMMER ARTS IN THE PARK CONCERT SERIES

Sponsored by Kent County Levy Court

Pack a picnic basket, bring a blanket or lawn chair, and join us at **Brecknock County Park** in Camden (80 Old Camden Road) every Wednesday evening at **6:30 p.m.** for free, live entertainment beginning **May 29 - August 14.**

May 29 - **The Funsters** (*Classic rock & soul*)

June 5 - **The Jimmies** (*80s Flashback*)

June 12 - **Sticky Situation** (*Rock/country/pop hits*)

June 19 - **Comfort Zone Band** (*R&B/dance*)

June 26 - **Zydeco-a-Go-Go** (*Louisiana zydeco/Cajun blues*)

July 3 - **Best Kept Soul** (*R&B/soul/dance*)

July 10 - **Kenny Don't Play** (*Rock/country/pop hits*)

July 17 - **Trinidad & Tobago Baltimore Steel Orchestra** (*Caribbean steel drums*)

July 24 - **Reunion** (*Classic rock & soul*)

July 31 - **Mike Hines & The Look** (*R&B/hip-hop/dance*)

August 7 - **The Jones Boys** (*Classic country/oldies*)

August 14 - **Philly Heart & Soul Band** (*70s tribute*)



(In case of inclement weather, the program will move inside to the Kent County Public Library, 497 S. Red Haven Lane, Dover. The status of our events will be available on our Facebook page (search "KCPLibrary"), or by calling the library at (302) 744-1919 after 4:00 p.m.)