

# Kent County LEVY COURT

Serving Kent County with Pride

Community Newsletter & Parks, Recreation  
and Library Activity Guide



**Fall 2024**

*follow us!*



*'Like' us!*

**@KCLevyCourt**



# About the LEVY COURT

Levy Court is your County government. Kent County Levy Court is comprised of seven elected Commissioners: six are elected from the districts in which they reside, and the seventh is elected at-large to represent the entire county. The Commissioners serve at the will of the electorate and answer solely to their constituents. Since the Commissioners are elected officials, it is customary to refer to them with the designation of Honorable.

Levy Court responsibilities include: enacting planning and land use ordinances; providing parks and recreation facilities; establishing fees; providing emergency medical services; 911

communications; emergency management; approving sewer system construction; establishing the yearly tax rate and overseeing the county departments that support the mission of Levy Court. The Commissioners appoint a County Administrator who is responsible for managing the day-to-day operations of county government.

Levy Court offices are located at 555 Bay Road. Residents may call 744-2300 to reach a County Office.

For more information on Levy Court, please visit our website at [www.kentcountyde.gov](http://www.kentcountyde.gov).



**HON. TERRY L. PEPPER**  
President  
Commissioner At-Large  
302-697-9194



**HON. ALLAN F. ANGEL**  
Vice-President  
Commissioner 3rd District  
Committee: Administration  
302-382-6735



**HON. JOANNE MASTEN**  
Commissioner 1st District  
Committee:  
Planning Services  
302-270-1747



**HON. JEFFREY W. HALL**  
Commissioner 2nd District  
Committee:  
Finance Committee  
302-632-0757



**HON. ROBERT J. SCOTT**  
Commissioner: 4th District  
Committee:  
Public Safety  
302-505-0198



**HON. JODY SWEENEY**  
Commissioner 5th District  
Committee:  
Community Services  
302-943-7328



**HON. PAUL HERTZ**  
Commissioner 6th District  
Committee:  
Public Works  
302-505-2310

## About the ROW OFFICES

Kent County has four Row Officers: each of which is an elected official. Row Officers serve four year terms and each is empowered to manage their office. Each row office performs a distinct function within the County Government.

Row Officers are held accountable to the electorate and it is customary to refer to them with the designation of Honorable. These offices are open Monday through Friday from 8:00 A.M. to 5:00 P.M.

### REGISTER OF WILLS:

**Hon. Harold K. Brode**  
Harold.Brode@kentcountyde.gov  
302-744-2330

**Chief Deputy - Dianne M. Rager**  
Dianne.Rager@kentcountyde.gov  
302-744-2328

### RECORDER OF DEEDS:

**Hon. Eugenia Thornton**  
Eugenia.Thornton@kentcountyde.gov  
302-744-2321

**Deputy - Darin Dell**  
Darin.Dell@kentcountyde.gov  
302-744-2318

### CLERK OF THE PEACE:

**Hon. Brenda Wootten**  
Brenda.Wootten@kentcountyde.gov  
302-744-2346

**Deputy - Patricia A. Brown**  
Trish.Brown@kentcountyde.gov  
302-744-2347

### SHERIFF:

**Hon. Norman Barlow**  
Norman.Barlow@kentcountyde.gov  
302-736-2161

**Chief Deputy - Robert Daddio**  
Robert.Daddio@kentcountyde.gov  
302-736-2161

# Kent County PHONE DIRECTORY

**Kent County  
Administrative Complex  
555 Bay Road  
Dover, DE 19901**

Levy Court	302-744-2305
Assessment Office	302-744-2401
Building Permits & Inspections	302-744-2451
Code Enforcement	302-744-2452
Community Development	302-744-2480
Economic Development	302-678-3028
Engineering	302-744-2430
Facilities Management	302-744-2357
Finance	302-744-2386
Tax Section	302-744-2341
GIS/Mapping	302-744-2416
Information Technology	302-744-2365
Parks & Recreation	302-744-2495
Personnel	302-744-2310
Planning	302-744-2471

**Kent County Emergency Services Building  
911 Public Safety Boulevard  
Dover, DE 19901**

Emergency Communications	302-735-2200
Emergency Management	302-735-3465
Emergency Medical Services	302-735-2180

**Kent County Library  
497 South Red Haven Lane  
Dover, DE 19901**

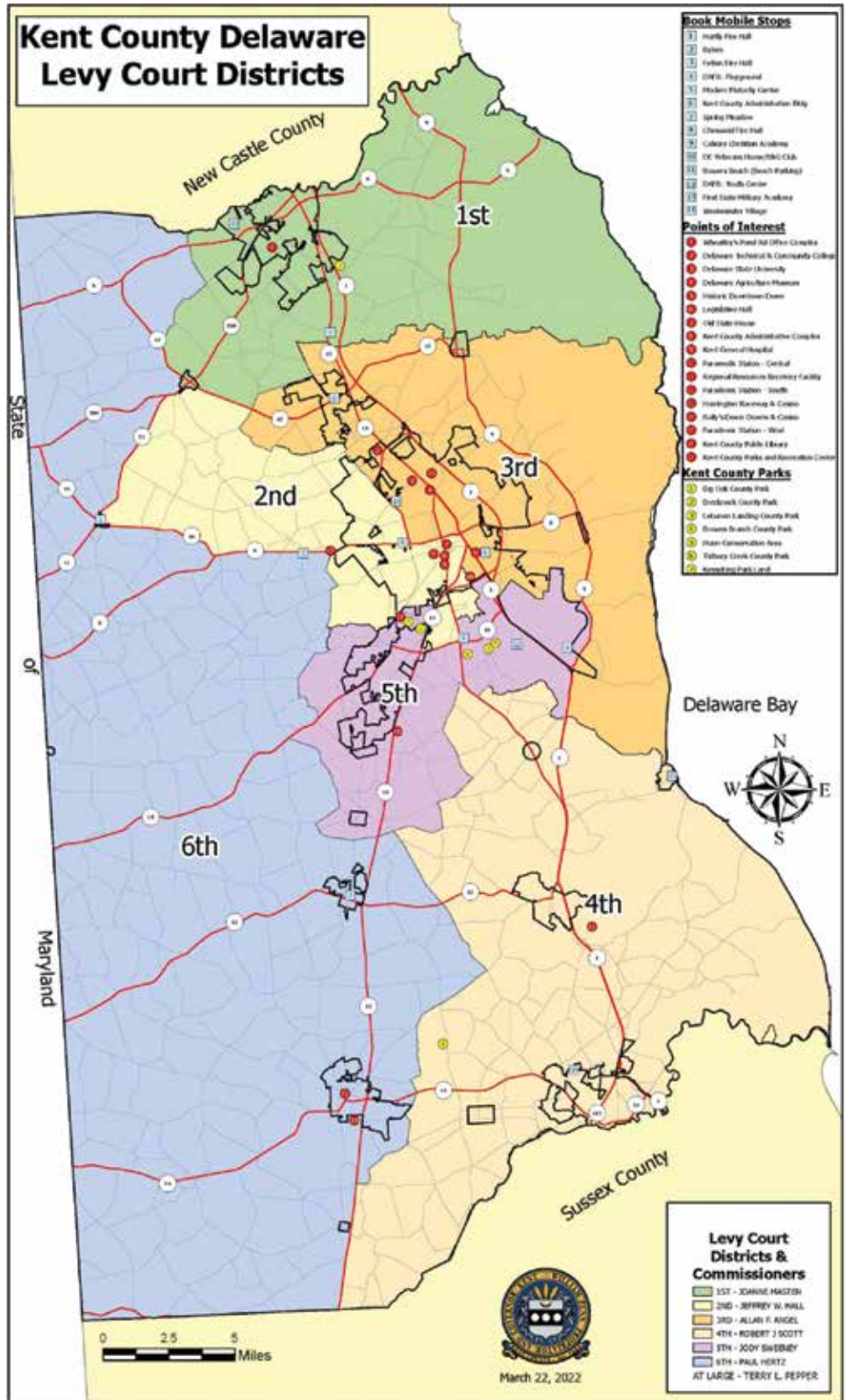
Library Services	302-744-1919
------------------	--------------

**Kent County Parks and Recreation  
1683 New Burton Road  
Dover, DE 19904**

Main Number	302-744-2495
-------------	--------------

**Kent County Wastewater Treatment Plant  
139 Milford Neck Road  
Milford, DE 19963**

Wastewater Facilities	302-335-6000
-----------------------	--------------



# Kent County's Friendly Library on the Highway is Named THE 2024 DELAWARE LIBRARY OF THE YEAR!

The Kent County Public Library in Delaware was awarded the 2024 Library of the Year by the Delaware Library Association (DLA). This prestigious award recognizes outstanding merit in serving patrons and the community through innovative programs and activities. "Our staff is flattered and thrilled by this award! After all, Delaware libraries offer some awesome opportunities to their users," said Hilary Welliver, County Librarian, Kent County Public Library. "It's wonderful to be in such great company even if we are a small-sized library!"

Given the following list of accomplishments, take a glimpse of some of the library's offerings leading to the 2024 Library of the Year award:

1. **New Zealand Penpal** program: The library's **New Zealand Penpal** program connects 600 participants, fostering international connections and cultural exchange.
2. **Young Authors Workshop**: Bringing together young writers, professional authors and illustrators, the **Young Authors Workshop** provides a day of fun, education and creativity. While the youth participate, their parents attend a program in fostering creativity.
3. **Author Showcases**: The library hosts well-attended **Author Showcases** in the Fall and Spring, featuring regional and nationally-acclaimed authors.
4. **Senior Art Workshops and Open Studios**: The library offers **Senior Art Workshops** and open art studios, showcasing the work of textile artists inspired by Vincent Van Gogh, as well as miniature paintings.
5. **Community Engagement**: The library collaborates with community groups such as **4-H** and **Scouts**, providing enriching experiences for residents.
6. **Arts in the Park**: A popular weekly summer music series attracts around 200 individuals weekly at **Brecknock County Park**.
7. **Mobile Library Outreach**: Kent County's mobile library makes at least a dozen weekly stops year-round, reaching underserved schools, communities and institutions.
8. **Celebrating Diversity**: The library hosts events like the **Hispanic Heritage Festival** and **Mini Sakura Matsuri**, celebrating Kent County's diverse demographics. Additionally, the **Delaware Anime Society** holds monthly meetings.
9. **Spotlight on Delaware History**: Collaborating with Mid-Atlantic authors, noted historians, and Delaware agencies, devoted to history, culture, and humanities. These monthly programs provide valuable insights into the state's rich heritage.
10. **Outdoor Family Films and Community Events**: In partnership with **Kent County Parks and Recreation**, the library occasionally offers free family films on a cinema-sized outdoor screen. This initiative brings families together for entertainment and community bonding. The library has also hosted events like **puzzle and board game swaps**, **dulcimer classes**, and numerous **book clubs** and **story times**. Notably,



Pictured from left: Susan Hall, Keturah Goldsberry, Dr. Hilary Welliver, Cathy Michalski, Jojo Fancher, Patty Hartmannsgruber.

bly, the **"Rods for Reading" Car Show**, organized with the Friends of **Kent County Public Library** showcases community spirit and literacy advocacy.

11. **Literacy Initiatives for Youth**: Kent County Public Library actively promotes literacy through a variety of programs, such as:

- **9 Little Free Library community book exchange sites**
- **PAWS for Reading**: Encouraging children to read aloud to therapy dogs
- **Dial-a-Story**: Providing recorded stories for young listeners
- **1000 Books Before Kindergarten**: Fostering early literacy
- **Dolly Parton's Imagination Library**: Mailing free books to children
- **Summer and Winter Reading Challenges**: Engaging readers of all ages

12. **Online Services**: The library offers unique online resources including:

- **Mango Languages**: Language learning platform
- **Brainfuse, VetNow, HelpNow, and JobNow**: Support for veterans, job seekers and learners. These services are accessible with a **Kent County-issued library card**, available in both English and Spanish.
- Additionally, as part of the **Delaware Library Consortium**, cardholders can access resources from public libraries statewide, including platforms like **hoopla, Flipster, and Libby/OverDrive**.

13. **Dedicated Staff**: The library's helpful and knowledgeable staff is its greatest asset. Despite being a small library, it operates **seven days a week** and conducts **weekly mobile library stops** in each **Levy Court District**.

Library Director, Dr. Hilary Welliver is proud of the team's sustained achievements and innovation, recognized by the 2024 Library of the Year award from the Delaware Library Association. The Friendly Library on the Highway continues to make a positive impact, fostering learning, community engagement and a love for reading!

# Look at what the KENT ECONOMIC PARTNERSHIP (KEP) is up to!

Linda Parkowski, Executive Director of the Kent Economic Partnership (KEP) proudly announces the many successes and accomplishments of the organization since its inception in 2018.

To start off, the KEP's accomplishments hinge significantly on the support from their partners, who without their support, it would not have been possible to identify and assist over 40 projects in Central Delaware.

These initiatives have resulted in concrete outcomes, including 1,585 new jobs and capital investments surpassing \$340 million.

Notably, 56% of the projects involve expansions by local businesses, highlighting Central Delaware's dedication to fostering existing enterprises.

Equally significant is that the remaining 43% represent companies seeking to establish a presence in the region, emphasizing Central Delaware's attractiveness as a business-friendly environment.



## Harrington Industrial Park Receives \$3.4 MILLION

The City of Harrington has been granted a significant boost with a \$3.4 million Community Project Funding grant earmarked for the development of an Industrial Park.

This funding will facilitate crucial infrastructure enhancements, including roadway access, water, sewer, stormwater management, electric, and railway access.

With a blend of available land and prime access to major highways and railways, this initiative presents a great opportunity for Central Delaware to generate new employment opportunities.



## BUSINESS RETENTION AND EXPANSION (BRE)

The KEP is conducting its Business Retention and Expansion across Central Delaware.

Business expansion plays a pivotal role in driving regional economic growth. By cultivating strong relationships and offering steadfast support to local businesses, we aim to facilitate your growth and address your unique business requirements.

Our commitment is to collaborate closely with you, ensuring that your expansion goals are met effectively. Together, we can build a resilient and prosperous economic environment for the entire community.

To learn more about new programs and to schedule your BRE visit, please email Zach Prebula at: zachary.prebula@kentcountyde.gov



From left to right is Zachary Prebula (KEP), Linda Parkowski (KEP), Danny Bento (Kraft Production Manager), Kevin Mills (Kraft Plant Controller, Finance), Charles Madden (Delaware Prosperity Partnership), and Bryan Mack (Delaware Prosperity Partnership).

# Phase 2 of the East-West Truck Freight Route Feasibility Analysis has started **AND WE NEED YOUR RECOMMENDATIONS!**

The goal of phase 2 is to identify both routes and portions of routes that are difficult for truckers to use, while also recommending enhancements or new alternatives. Close collaboration with local freight movers is essential to gather their invaluable insights prior to formulating recommendations.

If your company engages in freight transportation within Kent County, your feedback is indispensable for the study's effective-

ness. We kindly request your participation in a brief survey to aid in enhancing the East-West Freight Routes in Kent County.

Your input matters greatly — please visit <https://forms.office.com/r/t45LPe3rda> to access and complete the questionnaire.

Thank you for your contribution!

## Kent County Garbage Collection **YARD WASTE ENDING**

**Just a reminder to all Kent County Trash Districts with Yard Waste pick-up.**

**Yard Waste Collection will end the week of December 22, 2024.**

Ensure all yard waste is loose inside your green can; no bagged yard waste will be serviced.

As fall approaches you may have excessive amounts of leaves, these also must be placed inside of the appropriate can.

If you need additional cans and are maxed out on County issued cans you may use additional 32 gallon or less personal cans.

A total of five (5) cans including your county-issued cans will be serviced each week per collection type.

For example, you may have up to 5 trash, 5 recycling and 5 yard waste cans out each week for pick up, the first can must always be your County issued can.

Bulk pick-up will not be serviced if you have the maximum number of cans out for service that week.

Kent County Public Works allows up to four (4) County-issued cans per property. If you would like to request additional cans, have any questions, or for any clarification regarding your services please get in touch with our office at 302-744-2429.

**KENT COUNTY LEVY COURT**  
"SERVING KENT COUNTY WITH PRIDE"



Connect with us at:  
[Kentcountyde.gov](http://Kentcountyde.gov)



- Property Info
- Records
- Deeds
- Wills & Estates
- Taxes & Credits
- Online Bill Pay
- Parks & Recreation
- Public Library
- Planning & Permits
- Employment
- Marriage Licenses
- Inspections
- Code Enforcement
- Manufactured Housing
- Sheriff's Office
- Trash & Recycling
- Public Works
- Emergency Services
- GIS Mapping
- Permits

*Got a Question? Need help finding a county service? Scan QR to Connect!*

**Or just ask, Reggie the Help Bot**



# Wheatley's Pond Paramedic Station #6 GETS A NEW NAME

On May 10, the Kent County Levy Court Commissioners gathered for a ceremony in honor of the man known as “the architect of paramedics”, Bruce C Ennis whose name now resides on Wheatley's Pond Paramedic Station #6. Levy Court President Terry Pepper noted that the station was first dedicated in 2003 and now receives 5,000 calls per year.

First District Commissioner Joanne Masten, who represents Smyrna on the Levy Court said, “Bruce tirelessly championed the establishment of Delaware’s modern emergency response and statewide paramedic system ... I am privileged to stand before you today representing Kent County Levy Court and our community as we pay tribute to the extraordinary work of Senator Bruce C. Ennis”.

After Commissioner Masten’s remarks, Public Safety Chief Kevin Sipple shared with the audience the growth of the paramedic profession.

He said, “In 1990, thanks to Senator Ennis’s leadership and tenacity, the Statewide Paramedics Act was passed into law, laying the foundation for our state’s paramedic program.

Since then, hundreds of highly skilled paramedics have been trained, equipped, and deployed across our state, been equipped and deployed across our states ready to an-

swer the call of duty at a moment’s notice. They have become the backbone of our emergency medical services, providing critical care and saving lives each and every day.”

Following, Chief Sipple, Senators Bill Carson and David Wilson presented a proclamation from the 152nd General Assembly and posed for a picture with their long-time colleague.

Finally, the man of the hour spoke. He thanked members of the Levy Court for naming the building in his honor. He explained that he embarked on this assignment after the Administrative Task Force of the American Medical Service Council confirmed the need for a statewide paramedic service.

He said, “The impact of such a service would dramatically result in reduced mortality and morbidity rates in Delaware, reducing the overall cost of healthcare and delivery.

After all remarks were made, Levy Court Commissioners escorted Senator Ennis to unveil the new sign at 5100 Wheatley's Pond Road, the first sign in Kent County with the new branded wave and colors. Designers of the sign and branded marks, Jim Shure and Kate Greene of IMD4 were thanked for the wonderful work they had done.

An unveiling of a bronze plaque inside of the paramedic station followed.



Pictured from left, Commissioners, Robert Scott, Paul Hertz, Senator Bruce C. Ennis, Commissioner Jody Sweeney, Public Safety Chief Kevin Sipple, Commissioners Terry Pepper, Allan Angel and Joanne Masten.



From left, John Tinger, Ken Decker, Kevin Sipple, Jody Sweeney, Terry Pepper, Allan Angel, Senator Bruce Ennis, Paul Hertz, Joanne Masten and Robert Scott.

## Fall Holidays & Trash Collection Services

<b>Thanksgiving Day</b>	Thursday, November 28, 2024	Trash Services, One Day Later, <b>Thurs., &amp; Fri. Customers</b>
<b>Christmas Day</b>	Wednesday, December 25, 2024	Trash Services, One Day Later, <b>Wed., Thurs., &amp; Fri. Customers</b>
<b>New Year’s Day</b>	Wednesday, January 1, 2025	Trash Services, One Day Later, <b>Wed., Thurs., &amp; Fri. Customers</b>

# Kent County EMS Hosts 2nd Annual CARDIAC ARREST SURVIVORS' CEREMONY

The Kent County Department of Public Safety – Division of Emergency Medical Services (KCEMS) held its 2nd Annual Cardiac Arrest Survivors' Ceremony at 6 p.m. on Wednesday, May 22, 2024, at the Kent County Administrative Complex. This event is held annually during National EMS Week to reunite cardiac arrest survivors with the individuals who swiftly responded and resuscitated with skill.

Nearly 200 people, including survivors, bystanders, first re-

sponders, local dignitaries, and community members gathered for this year's ceremony. This year's ceremony shared the incredible personal stories of three cardiac arrest survivors from calendar year 2023, as well as recognized the bystanders and the first responder community that played such an important role in their survival.

KCEMS also highlighted the importance of educating more people about CPR and the critical steps to take during a cardiac arrest emergency. This year's event included the opportunity for a cardiac arrest survivor to be able to meet a bystander that rendered aid before first responders arrived on scene. Knowledge and preparedness are powerful tools, and together, we can equip more individuals to become lifesavers and ultimately have the opportunity to celebrate more tales of survival.

"It is an honor to host this event, where we can reunite survivors with the courageous individuals who, in their moment of need, delivered life-saving care," said Staff Sergeant Greg Schulties of the Kent County Department of Public Safety - EMS. "We are looking forward to continuing our efforts to educate and empower the Kent County community so that together we can create a world where stories of survival are the norm."

The Kent County Department of Public Safety, Division of EMS, has already begun preparations for the 3rd Annual Cardiac Arrest Survivors' Ceremony scheduled to be held in May 2025.



From Left (Front Row) David Hurley (Survivor) and Lona Hurley, (Back Row) Jonathan Stewart, Rachel Coffey, Richard Allen, Michael Jenkins, Stephen Phillips, Christopher Clough.



From Left (Front Row) James Wilson, Ken Graw, Mike Rains, Nancy Rains (Survivor), Kelli Brothers, Kevin Sipple, (Back Row) Orlando Pritchett, Brian Neese, Dana Burton, Keven Rains, William Jester.



From Left (Front Row) Diane Acker (Survivor) and Bob Speakman, (Back Row) Eric Ross, Greg Schulties, Michael Porter, Alec Thornton, Beverly Hayes.



# Employees of the Month

## ALEYSHIA F. YOUNG

### APRIL 2024



**Aleyshia F. Young**  
Register of Wills  
Office

Kent County Department Heads selected ALEYSHIA F. YOUNG from the Register of Wills Office as the APRIL 2024 Employee of the Month.

Aleyshia is the Deputy Register of Wills in the Register of Wills Office and started with Kent County in June 2023. Aleyshia received her law degree from Widener University. She worked as an attorney in the public defender's office and as an in-house council while in Guam. She moved to Connecticut and served as a clerk in Superior Court and finally as an attorney for a law firm. Upon moving to Delaware, Aleyshia began her career with the County.

Aleyshia is responsible for reviewing wills and petitions submitted to open estates for Probate.

During this process she is often the referee between the Personal

Representative and the other family members or beneficiaries. She oversees the process from beginning to end ensuring accuracy of the documents and explaining the overall fiduciary responsibility of the estate process. Aleyshia has also been key in implementing the new software program for the office in March of this year. She worked diligently with the vendor verifying account information and details, allowing the go-live date to occur as scheduled.

According to the Chief Deputy Register of Wills, Dianne Rager, "Aleyshia has been a true asset to the office with her wealth of knowledge. She makes the public feel at ease as they deal with a very stressful and upsetting time in their lives. She was instrumental during the network intrusion in reproducing all our forms from various outlets so we could keep offering services to the public. She provides impeccable service every single day and is always willing to lend a helping hand."

Congratulations Aleyshia on a job well done!

## DENISE Y. HAMM

### MAY 2024



**Denise Y. Hamm**  
Sheriff's Office

Kent County Department Heads have selected DENISE Y. HAMM from the Sheriff's Office as the MAY 2024 Employee of the Month.

Denise is the Administrative Assistant in the Sheriff's Office and started with Kent County in May 2022. Denise began her career with the County as an Office Support Specialist, later re-titled to Sheriff Records Specialist. Quickly identified as a rising star, Denise's attention to detail, ability to master and retain knowledge of office processes and procedures, and willingness to adapt and learn positioned her to be promoted to Administrative Assistant in January 2024.

Denise is responsible for overseeing the daily operations of the Sheriff's Office staff, which

includes supervising and assigning work and daily tasks; completes payroll duties as the department's coordinator; acts as the liaison between the courts, attorneys and public for policy, procedures, and State and County codes; assists with the preparation of the department's annual budget; and maintains departmental records and account reconciliation of Sheriff Sale data and information.

According to the County Sheriff, Norman Barlow, "Since her arrival as a new hire, Denise has demonstrated professionalism and a work ethic that every department head hopes to find and add to their office. Denise's dedication and willingness to step up and step in during recent staffing transitions further proves her tenaciousness and ability as an effective leader overseeing office administration. She truly deserves this award on her own merit and diligence shown throughout recent challenges she faced, always bringing a positive outlook daily."

Congratulations Denise on a job well done!

## JUSTIN L. CONRAD

### JUNE 2024



**Justin L. Conrad**  
Department of  
Public Safety  
– Emergency  
Medical Services  
Division

Kent County Department Heads have selected JUSTIN L. CONRAD from the Department of Public Safety – Emergency Medical Services Division as the JUNE 2024 Employee of the Month.

Justin is the EMS Operations Officer in the EMS Division and started with Kent County in January 2014. Justin began his career with the County as a Paramedic I, later promoted to a Paramedic II in January 2016. During his tenure as a Medic II, Justin served as a Field Training Officer (FTO) assisting and educating newer medics while earning his master's degree from Wilmington University majoring in Business Administration with a concentration in Health Care Administration. After three years of serving as an FTO, Justin was promoted to Paramedic III – Sergeant in November 2019, and was ultimately promoted Operations Officer – Captain in February 2022.

Justin's primary role is to supervise and coordinate all operations with-

in the department, including scheduling and implementing special events and readiness functions. He develops programs for both the department and community events and oversees all operational aspects of the EMS Division. Justin also oversees all fleet management, scheduling vehicle maintenance and repairs, and ensuring the maintenance of stations and facilities. His duties also encompass coordinating and managing grant funds, staffing resources for special events, and liaising with local fire departments.

According to the Director of Public Safety, Chief Kevin Sipple, "Captain Justin Conrad has distinguished himself through his exceptional leadership and transformative approach in the Operations Captain role. He has diligently streamlined daily operations, optimizing the efficiency of our ordering processes and fleet management. At headquarters, Captain Conrad has expertly reorganized systems and procedures to foster greater productivity and organization. His dedication to operational excellence and ability to drive significant improvements have set a high standard within our team. We are grateful for his unwavering commitment and the positive impact he continues to make each day."

Congratulations Justin on a job well done!

# KENT COUNTY LEVY COURT, COMMUNITY SERVICES DEPARTMENT

## Upcoming Programs and Activities for Recreation, Parks, and Libraries



**Fall 2024**

### KENT COUNTY PARKS AND RECREATION & KENT COUNTY RECREATION CENTER

1683 New Burton Rd.  
Dover, DE 19904

Office Hours:  
Monday – Friday,  
8:00 a.m. – 5:00 p.m.  
Phone: 302-744-2495

Email:  
ParksRec@KentCountyDE.gov  
[www.KentCountyDE.gov](http://www.KentCountyDE.gov)

### Parks and Recreation Commission

Kevin Zimmerman, Chairman	4th District
John Stant III, Vice Chairman	2nd District
Walter Carroll	6th District
Ed Coker	1st District
James E. Long	5th District
Brian J. Michalski	At Large
Walter Waite, Jr.	3rd District

### Mission Statement:

Our mission is to plan, promote and develop recreational facilities and activities consistent with the needs of all Kent County residents for now and the future.

### Commission Goals:

1. To promote the health, welfare and safety of all recreational participants
2. To monitor recreational facilities and programs
3. To study and identify needed recreational facilities and services
4. To support the Park and Recreation Division in serving all Kent Countians
5. To fulfill responsibilities delegated by Kent County Levy Court under Article III of the Parks and Recreation Commission Bylaws
6. To protect and conserve natural resources
7. To promote an awareness of public recreational facilities in Kent County
8. To incorporate technological resources into the County recreational planning and delivery system
9. To promote and develop Greenways as recreational resources
10. To function as a recreational advocate on behalf of the population of Kent County
11. To work in conjunction with other agencies to enhance recreational resources
12. To expand recreational and leisure activities
13. To insure compliance with provisions for open space, preservation and management
14. To identify and recommend funding sources that support parks and recreation opportunities

Accepted by Kent County Levy Court 8/22/2000

## ART TIME MACHINE: BLAST TO THE PAST!

Ages: 10-14 Fee: \$90  
 Days: Wed Time: 10:00 a.m. – 12:00 p.m.  
 Sess: Sept 11 – Oct 16 AC#ATM911

*The Dover Art League, 21 W. Loockerman St., Dover.* In this class, students will build an exploratory portfolio with a minimum of 5 complete paintings on canvas, paper, and wood. Participants will learn to effectively use acrylic paint, watercolor paint, mono-printing techniques, oil paint, and more. Participants will be taught techniques for paint skill building in the mediums listed previously and at the same time will explore art historical concepts and studio practice investigation methodology. Participants will learn technical skills, art historical concepts, and how to appropriately evolve in their own personal content and stylistic interests and approaches. The conceptual approaches relevant to studio practice. Instructor: Rebecca Walsen. Min 5, Max 15.

## BEGINNER AND ADVANCED HAND CROCHET OR KNITTING DESIGN

Ages: 13 & up Fees: \$65  
 Days: Tue Hours: 5:30 – 7:30 p.m.  
 Sess: Oct 8, 15, 22 AC#CROKNI108  
 Sess: Nov 19, 26 & Dec 3 AC#CROKNI1119

*Kent County Administrative Complex, Room 126A, 555 Bay Rd, Dover.* The beginner class will learn how to make a scarf and potholders, participants will keep all projects made. The advanced class will learn how to make their own projects. **(Please indicate on registration form whether you are a crocheter or knitter, beginner or advanced.) Parents must stay if child is under 18.** Minimum of 3, maximum of 15. Instructor: Manh Nguyen, with over 40 years of teaching experience. **For a list of class supplies, please call Manh at 302-530-9525.**

## BEGINNER WATERCOLOR

Ages: 16+ Fee: \$125  
 Days: Mon Time: 5:00 – 7:00 p.m.  
 Sess: Oct 7 – 28 AC#BWC1007

*The Dover Art League, 21 W. Loockerman St., Dover.* Students will learn the basics of this unique medium, one of the most useful learning tools for virtually all artistic practices. They will explore the fundamentals of art and design through implementation of skills related to brush and wash techniques, color mixing, planning and observation. Students will learn about supplies, paper, and brush preparations. Students will learn various techniques such as wet to dry, color mixing, washes, and textures as well as the importance of whites, lights, and darks. They will then use their skills to engage with fundamental concepts in art and design. Projects will include several landscapes, several still life scenes and abstract works. \*All materials included. Instructor: Olivia Figueroa. Min 5, Max 10.

## FACES AND FORMS: DRAWING WITH PENCILS, CRAYONS, AND PASTELS

Ages: 8-12 Fee: \$80  
 Days: Thur Time: 5:00 – 7:00 p.m.  
 Sess: Oct 3 – 24 AC#FAF1003

*The Dover Art League, 21 W. Loockerman St., Dover.* Unlock your creativity in "Faces and Forms," a dynamic art class where students learn to draw faces using pencils, crayons, and pastels. Explore the foundational elements of art with lines and shapes and create portraits ranging from realistic to abstract. Through step-by-step guidance, you'll draw your classmates and self-portraits, mastering mixed media techniques and color blending. Join us and transform simple lines into expressive faces with unique artistic flair! All materials will be provided. Instructor: Jake Golden. Min 5, Max 10.

## LOG CABIN FOR BEGINNERS

Ages: 16 & up Fee: \$80  
 Days: Sat Hours: 3:00 – 6:00 p.m.  
 Sess: Oct 26–Nov 30 AC#LCQUILT1026  
 (no 11/16)

*Delaware Sewing Center, Rodney Village Shopping Center, Dover.* This class is designed for someone that wants to start quilting, or just need to brush up on quilting skills. Learn to rotary cut strips of fabric accurately. Then sew the strips into a log cabin quilt square. Add borders, machine quilt and sew on the binding. W00-H00 you have a Log Cabin Quilt. Minimum of 4, maximum of 6. **A sewing machine in good working order is needed. Must purchase the Log cabin book. For more information and a list of supplies, call instructor Crystal Sweeney at 302-674-9030.**

## INTRO TO DRAWING

Ages: 16+ Fees: \$100  
 Days: Thur Time: 5:00 – 7:00 p.m.  
 Sess: Sept 5 – 26 AC#ITD905

*The Dover Art League, 21 W. Loockerman St., Dover.* This intro to drawing course will focus on developing the beginner skills needed to render objects realistically. Students will develop the ability to "see" and translate what they are seeing to a 2-dimensional surface while exploring various drawing materials such as pencil and charcoal. The topics covered include form, contour, composition, line, perspective, and value. Through hands-on exercises and practical demonstrations, you'll gain proficiency in these techniques to capture the essence of your subjects with depth and nuance. All materials will be provided. Instructor: Guy Miller. Min 5, Max 12.

## MAGICAL ART ADVENTURES: INSPIRED BY HARRY POTTER

Ages: 7-12 Fee: \$90  
 Days: Thur Time: 1:00 – 3:00 p.m.  
 Sess: Oct 24 – Nov 21 AC#MAA1024

*The Dover Art League, 21 W. Loockerman St., Dover.* Step into the enchanting world of Harry Potter where each week, art projects are woven with the magic of the beloved book series. This art class was designed for homeschoolers who want to add more creativity to their practice. Whether a child is reading the first book or the last, every activity connects to the enchanting universe of Harry Potter. Create your own origami owls, sketch and color the majestic Hogwarts, craft and decorate paper mache wands, paint a terrarium inspired by magical plants, and write potions with a quill pen! Join us for a spellbinding journey through art and magic! All materials will be provided. Instructor: Jake Golden. Min 5, Max 15.

The Dover Art League is an inclusive and welcoming community for everyone, regardless of background or identity. While this class draws on the beloved Harry Potter series, we want to make it clear that J.K. Rowling's personal beliefs do not reflect the values of the Dover Art League. We are committed to fostering a positive, accepting, and supportive environment for all our participants.

## PERFECTING YOUR PALETTE

Ages: 7-11 Fee: \$80  
 Days: Sat Time: 10:00 a.m. – 12:00 p.m.  
 Sess: Oct 5 – 26 AC#PYP1005

*The Dover Art League, 21 W. Loockerman St., Dover.* Students will learn a plethora of necessary artist skills from brush techniques to layering their canvas. Each participant will learn brush techniques & their numbering with a 10-piece nylon bristle paint brush set. With these brushes, they will learn the vital and essential functions each brush provides. They will also learn the power of blending with one singular wet brush & the power of layering your colors into one another using the trusted color theory! They will learn about how to make & use primary, secondary & tertiary colors, and how different amounts of CMYK make up every single paint color needed on their palettes. Students will leave this program with perfected pieces of art, as well as the skills to continue their creative journeys. All materials will be provided. Instructor: Dierra Cooper. Min 5, Max 15.



# ARTS & CRAFTS

## PHOTOGRAPHY FOR BEGINNERS

Ages: 16+ Fees: \$100  
Days: Sun Time: 10 a.m. – 12 p.m.  
Sess: Oct 6 – Nov 10 AC#PFB1006

*The Dover Art League, 21 W. Loockerman St., Dover.* Do you have a camera, but still use the auto settings? Do you want maximum control over your images to achieve exactly what you envision? Then this class is for you! In this course students will learn the basics of photography including exposure, aperture, shutter speed, basic editing, and more! Students will have the opportunity during class hours to get outside and practice the techniques they learn. All you need is a DSLR camera and a notebook! The editing portion will be taught via a projector, but students can bring their own laptop if they'd like. Instructor: Jarred Knorr. Min 5, Max 15.

## SEWING MADE EASY AND FUN

Ages: 13 & up Fee: \$65  
Days: Mon Hours: 5:30 – 7:30 p.m.  
Sess: Oct 7, 14, 21 AC#SEW107  
Sess: Nov 18, 25 & Dec 2 AC#SEW118

*Kent County Administrative Complex, Room 126A, 555 Bay Rd, Dover.* Participants will learn sewing machine basics: operation, connect fabric, sew on a button and make a button hole (if your machine has one). The class will also cover how to hem a skirt, pants, shorts, dress, tunnel elastic, make a tie belt and repair a garment (**supplies not included**). **Participants will need to bring their machine and instruction manual. Parent must stay if child is under 18.** Instructor: Manh Nguyen, with over 40 years of teaching experience. **For a list of class supplies, please call Manh at 302-530-9525.** Min 3, Max 12.

## T-SHIRT QUILTING

Ages: 16 & up Fee: \$78  
Days: Tues Hours: 5:00 – 8:00 p.m.  
Sess: Oct 22–Nov 26 AC#TQUILT1022  
(no 11/5)

*Delaware Sewing Center, Rodney Village Shopping Center, Dover.* If you are like most people, you have a pile of treasured old T-shirts you just can't bear to throw away. This class is geared to turning your old clothes into lasting memories. Just think of a graduation gift, a lasting memory of a great vacation, or all those years of sports. No quilting skills are needed. Minimum of 4, maximum of 6. **A sewing machine is required in this class. For more information and a list of supplies, call instructor Crystal Sweeney at 302-674-9030.**

# EDUCATIONAL

## BEGINNER/INTERMEDIATE BOBBIN LACE

Ages: 13 & up Fee: \$51 (beginners)  
AC#BOBBINB1112  
Fee: \$41 (intermediate)  
AC#BOBBINI1112

Days: Tue  
Sess: Nov 12 – Dec 3 Hours: 6:00-9:00 p.m.

*Kent County Administrative Complex, Room 221, 555 Bay Road, Dover.* Welcome to the world of the 18th century cottage industry craft of hand-made lace. Bobbin Lace will be made using pins on a lacemaking pillow with each thread on an individual bobbin. Stitches are created by crossing or twisting the bobbins. Participants will learn the beginning stitches of Torchon lace to create several bookmarks. Lacemaking equipment will be available to rent from the instructor. Prerequisite: Attended the beginner class or have basic knowledge. **(Must bring own equipment.) Minimum of 4, maximum of 6. For a list of supplies and rental fees, call instructor Kim Czerwinski at 302-736-6336.**

## BREATH WORK & SOUND BATH MEDITATION

Ages: 16 & up Fee: \$30  
Days: Wed Hours: 7:00 – 8:00 p.m.  
Sess: Oct 9 AC#SOUNDBATH109

*Kent County Administrative Complex, Room 221, 555 Bay Road, Dover.* Combining the power of breath with healing sound, this class assists students in taking control of their stress response, sleep quality & energy levels regardless of age or health. Students will practice proper breathing techniques while listening to gentle tones designed to induce an almost immediate feeling of well-being. A guided meditation will accompany for part of the class. Bring a yoga mat/cushion or use one provided. Led by certified Breath Coach & Meditation Instructor Audra Littleton. Visit [www.Find-Ur-Balance.com](http://www.Find-Ur-Balance.com) for more info. Min 5, Max 10.

## EFT FOR EVERYTHING

Ages: 16 & up Fee: \$41  
Days: Wed Hours: 6:30 – 8:30 p.m.  
Sess: Sept 11 AC#EFT911

*Kent County Administrative Complex, Levy Court, Room 221.* The Emotional Freedom Technique (EFT), OR "Tapping", is the most influential and widely known energy psychology method in the world. When properly done, EFT reduces (or completely removes) any problem being addressed, often in less than twenty minutes. Participants will learn the tapping sequence and standard affirmations in order to benefit from EFT immediately. Class led by certified EFT practitioner, Audra Littleton. Min 5, Max 20.

## INTRODUCTION TO "EARTHING"

Ages: 14 & up Fee: \$41  
Days: Wed Hours: 6:30 – 8:30 p.m.  
Sess: Sept 18 AC#EARTHING918

*Big Oak Park, Smyrna. Pavilion (rain or shine).* Also known as "grounding", tens of thousands of testimonials prove this is so much more than a trend! In this hands-on workshop, students will learn the science behind the practice and discover why it rapidly decreases inflammation while improving blood flow, energy levels, sleep quality, and stress resistance, all by simply connecting to the planet's natural electric currents-even while indoors! Students will have an opportunity to test various connections using technology, and spend some quality time earthing, while being guided in some easy breath techniques. Take your health in your own hands this summer! Led by Breath & Wellness Coach, Audra Littleton. Visit [www.Find-Ur-Balance.com](http://www.Find-Ur-Balance.com) for more information. Min 5, Max 20.

## REIKI "1"

Ages: 16 & up Fee: \$74  
Days: Wed Hours: 6:30 – 8:30 p.m.  
Sess: Sept 25 & Oct 2 AC#REIKI1925

*Kent County Administrative Complex, Levy Court, Room 221* Reiki is a safe, simple and natural form of energy medicine. It is a complete system for self-care that compliments traditional medical care and promotes the body's natural ability to heal. Participants will learn the Reiki hand positions and complementary tools designed to be used as self-treatments, as well as for family and friends. Each participant receives traditional level 1 attunements, and a completion certificate. For more information, call Reiki Master Teacher Audra Littleton at 302-530-8220. Min 5, Max 12.

## REIKI "2"

Ages: 18 & up Fee: \$101  
Days: Wed Hours: 6:30 – 8:30 p.m.  
Sess: Oct 16 – 30 AC#REIKI21016

*Kent County Administrative Complex, Room 221, 555 Bay Road, Dover.* (Prerequisite Reiki "1"). Reiki II expands on the foundation of Reiki I. At the completion of this class, students will be considered a Reiki Practitioner and be able to administer Reiki healing energy at a professional level, if they choose. We will discuss practitioner ethics and steps to establishing a Reiki practice. Students will also learn the first three Reiki symbols as well as techniques for distance and surrogate healing. Level II attunements will enhance the ability to feel energy frequencies and improve their multi-sensory skills. Ample practice time is allowed so students may "learn by doing". Led by RMT Audra Littleton, visit her website, [www.Find-Ur-Balance.com](http://www.Find-Ur-Balance.com) for more info.

# FITNESS

## AQUA AEROBICS / CARDIO BLAST

Ages: 18 and up Fee: \$75  
 Days: Tues and Thurs Hours: 6:00-7:00 p.m.  
 Sess: Sept 10 – Oct 10 AC#FMMCAQ910  
 Sess: Oct 22 – Nov 26 AC#FMMCAQ1022  
 (No Class 10/31)

*Modern Maturity Center, Dover.* Take advantage of water's natural resistance to get an aerobic and toning workout without the wear and tear on your joints. This program focuses on cardiovascular fitness and range of motion and is a great workout for seniors. Participants must bring their suit and towel. Min 20, Max 25. Instructor: Betsy Gustafson, personal trainer and fitness instructor with 30+ years of experience.

## VIRTUAL BODY TONING

Ages: 16 & up Fee: \$55  
 Days: Mon & Wed Hours: 5:30 – 6:30 p.m.  
 Sess: Sept 9 – Oct 23 AC#BTONE99  
 Sess: Nov 4 – Dec 18 AC#BTONE114  
 (No class 11/27)

*Online classes, Zoom link provided for each class.* This class concentrates on those trouble areas (thighs, hips, and abdomen), as well as firming up the upper body (arms, back, shoulders, and chest). Participants should bring a mat and two 1 to 5 lb. hand weights. Min 10, Max 30. Instructor: Kathy Kennedy-Ratajack.

## VIRTUAL YOGA

Ages: 16 & up Fee: \$35  
 Days: Mon & Wed Hours: 6:35 – 7:05 p.m.  
 Sess: Sept 9 – Oct 23 AC#FYOGA99  
 Sess: Nov 4 – Dec 18 AC#FYOGA114  
 (No class 11/27)

*Online classes, Zoom link provided for each class.* Yoga begins with simple breathing exercises and stretches intended to clear the mind as well as open up the lungs. Most people beginning yoga will experience measurable progress in their strength and flexibility after a week or two of daily practice. Clothing should be comfortable to allow free movement. Participants must bring a yoga sticky mat. Min 10, Max 30. Instructor: Kathy Kennedy-Ratajack.

## ZUMBA

Ages: 16 & up Fee: \$55  
 Days: Mon & Wed Hours: 5:30 – 6:25 p.m.  
 Sess: Sept 9 – Oct 9 AC#FSNEZU909  
 Sess: Oct 14 – Nov 13 AC#FSNEZU1014  
 Sess: Nov 18 – Dec 18 AC#FSNEZU1118

*Smyrna, DE.* Zumba® is a mix of low-intensity and high-intensity moves for an interval-style, calorie-burning dance fitness party. Once the Latin and World rhythms take over, you'll see why Zumba® Fitness classes are often called exercise in disguise. You will get a total workout, combining all elements of fitness – cardio, muscle conditioning, balance and flexibility, boosted energy and a serious dose of awesome each time you leave class. **Please bring water to class.** Instructor: Karlett "Lett" Walker Licensed Zumba Instructor. Min 10, Max 25.

## ZUMBA GOLD PLUS

Ages: 16 and up Fee: \$65  
 Days: Mon & Wed Hours: 5:00-6:00 p.m.  
 Sess: Oct 2 – Nov 4 AC#FZGP1002  
 Sess: Nov 13 – Dec 16 AC#FZGP1113

*Kent County Recreation Center, 1683 New Burton Road, Dover.* Come join this fun and easy to follow Zumba class. This version of Zumba allows you to dance at your own pace. Incorporates verbal instruction in addition to hand cueing to further assist in the teaching process. This is a low impact dance party where you choose the intensity you want. You will groove to Latin, R&B, Oldies, Big Band, Rock, Dance Hall, Pop, and more. There is something for everyone and every fitness level. This is a no judgement zone, with tons of fun. Hope to see you there. Instructor: Denise Jackson. Min 10, Max 25.



# LEAGUES

## INDOOR BOYS HIGH SCHOOL LACROSSE LEAGUE

Ages: 13 to 18 Fee: \$60  
 Days: Thu Hours: 7:00 p.m.  
 Sess: Nov 21 – Dec 19 AC#BLAXLG1121  
 (NO GAMES 11/28)

Kent County Recreation Center, Turf Field 1683 New Burton Road, Dover. This pick-up league is designed to develop fundamental skills and techniques that will help prepare your game at the next level. All players will be placed on teams by the Coaching staff and will compete in games over the 6-week time frame. Players need to provide their own equipment (helmet, mouthpiece, gloves, elbow/shoulder pads and stick). Minimum of 10, maximum of 70. For more information, call Joe Paugh at 302-744-2486 or email at [Joseph.Paugh@kentcountyde.gov](mailto:Joseph.Paugh@kentcountyde.gov)

For League information & updates

## Kent County Parks & Recreation

# KENT YOUTH SOCCER LEAGUE



<https://secure.rec1.com/DE/kent-county-de/catalog>

302-744-2495 [KYSL@kentcountyde.gov](mailto:KYSL@kentcountyde.gov)

Kesselring County Park,  
 Kent County Recreation Center  
 1683 New Burton rd. Dover, DE 19904



# LEAGUES

## INDOOR YOUTH LACROSSE LEAGUE

Ages: 9 to 13                      Fee: \$60  
Days: Thu                              Hours: 5:45 p.m.  
Sess: Nov 21 – Dec 19              AC#YLAXLG1121  
(NO GAMES 11/28)

*Kent County Recreation Center, Turf Field 1683 New Burton Road, Dover.* This pick-up league is designed to develop fundamental skills and techniques that will help prepare your game at the next level. All players will be placed on teams by the coaching staff and will compete in games over the 6-week time frame. Players need to provide their own equipment (helmet, mouthpiece, gloves, elbow/shoulder pads and stick). Min 10, Max 70. For more information, call Joe Paugh at 302-744-2486 or email at [Joseph.Paugh@kentcountyde.gov](mailto:Joseph.Paugh@kentcountyde.gov)

## JR. NBA PRESEASON

Fees: \$50 (Includes T-shirt)  
Ages: 7 - 9                              AC#JRNBPAPREA904  
Days: Mon & Wed                      Time: 6:00 – 7:00 p.m.  
Ages: 10 - 12                              AC#JRNBPAPREB904  
Days: Mon & Wed                      Time: 7:00 – 8:00 p.m.  
Sess: Sept 4 – 30

*Kent County Recreation Center, 1683 New Burton Rd, Dover.* Players will take part in basketball skills development clinics that will teach fundamental basketball skills including ball-handling, shooting, rebounding, and passing. Players will rotate through skill development stations and participate in scrimmages to further develop skills. Min 20, Max 50 in each division.

## JR. NBA LEAGUE ROOKIE DIVISION

Ages: 7 - 8                              Fees: \$80  
Days: Practice - Tue                      6:00 – 6:30 p.m.,  
Games: Tue                                  6:45 – 7:15 p.m.  
Sess: Oct 22 – Dec 10                  AC#JRNBA24(7-8)  
(NO: 11/5 or 11/26)

## YOUTH DIVISION

Ages: 9 - 10                              Fees: \$80  
Days: Practice - Mon                      6:30 – 8:30 p.m.,  
Games: Wed                                  6:30 – 8:30 p.m.  
Sess: Oct 16 – Dec 11                  AC#JRNBA24(9-10)  
(NO: 11/11, 11/25 or 11/27)

## JUNIOR DIVISION (CO-ED)

Ages: 11 - 12  
Days: Practice - Mon                      6:30 – 8:30 p.m.,  
Games: Wed                                  6:30 – 8:30 p.m.  
Sess: Oct 16 – Dec 11                  AC#JRNBA24(11-12)  
(NO: 11/11, 11/25, or 11/27)

## RECREATIONAL DIVISION (CO-ED)

Ages: 13 - 16  
Days: Practice - Mon                      6:30 – 8:30 p.m.,  
Games: Wed                                  6:30 – 8:30 p.m.  
Sess: Oct 16 – Dec 11                  AC#JRNBA24(13-16)  
(NO: 11/11, 11/25, or 11/27)

This league values diversity and inclusion at all

## MEN'S FALL SOFTBALL LEAGUE

Ages: 16 & up                              Fees: \$550  
Days: Sun                                  Time: 9:00 a.m. – 1:30 p.m.  
Sess: Aug 18                                  AC#MFL818

*Big Oak County Park, Big Oak Road, Smyrna.* 6-week regular season double-header games with single elimination tournament to end the league. League will be modified USSSA governed. Contact Brent Mollohan for more information. Registration deadline 8/12/24.

## NFL YOUTH FLAG FOOTBALL LEAGUE

Ages: 7-14                                  Fee: \$80 (Includes Jersey)  
Days: Wed (Games)                      Days: Mon (Practices)  
(No Practice 11/11)

Sess: Sept 25 – Nov 20

**Ages- 7 to 10**                              AC#YNFLFL925A

Mon & Wed, 6:00 – 7:00 p.m.

**Ages – 11 to 14**                              AC#YNFLFL925B

Mon & Wed, 7:00 – 8:00 p.m.

*Kent County Recreation Center, Turf Field 1683 New Burton Road, Dover.* The largest flag football program in the nation offers a fun, non-contact football experience for boys and girls. Participants will receive training in fundamental skills of offense and defense. This non-contact league emphasizes throwing and catching. Parents or guardians are encouraged to volunteer as coaches and assistant coaches. If you are over 18 and would like to volunteer, please call the Recreation Office. (Background checks are required for all coaches and assistant coaches and will be administered free of charge.) For more information, call Joe Paugh at 302-744-2486 or email at [joseph.paugh@kentcountyde.gov](mailto:joseph.paugh@kentcountyde.gov)

levels and will strive to be a positive experience for its players, teams, and coaches. Players will be encouraged to play ethically, honestly, with fairness, hustle, and enthusiasm. We believe that hard work and playing to the best of one's ability is more important than the outcome of games. All Divisions are co-ed.

Teams will play games one night a week and have practice on another (Except Rookie Division). A full schedule of team practices and games will be distributed at the beginning of the league. October 16th and 21st will be player showcase nights (Except Rookie Division). Games will have two 20-minute halves with a running clock. First game will be October 30th (Except Rookie Division). Jr. NBA jerseys will be provided.

Additional volunteer coaches and assistants are needed. If you are over 18 and would like to volunteer, please call the Recreation Office at 302-744-2495. (Background checks are required for all coaches and assistants and will be administered free of charge.)

The JR. NBA, NBA, and NBA Properties Inc. do not in any way control or operate the activities of any organization team

## OUTDOOR BOYS HIGH SCHOOL LACROSSE LEAGUE

Ages: 13 to 18                              Fee: \$87  
Days: Sun                                  Hours: 10:00 a.m.  
Sess: Sept 8 – Oct 13                      AC#YBLAXLG908

*Kent County Recreation Center, Turf Field 1683 New Burton Road, Dover.* This pick-up league is designed to develop fundamental skills and techniques that will help prepare your game at the next level. All players will be placed on teams by the Coaching staff and will compete in games over the 6-week time frame. Players need to provide their own equipment (helmet, mouthpiece, gloves, elbow/shoulder pads and stick). Min 10, Max 70. For more information, call Joe Paugh at 302-744-2486 or email at [Joseph.Paugh@kentcountyde.gov](mailto:Joseph.Paugh@kentcountyde.gov)

## OUTDOOR YOUTH LACROSSE LEAGUE

Ages: 9 to 13                              Fee: \$87  
Days: Sun                                  Hours: 11:30 a.m.  
Sess: Sept 8 – Oct 13                      AC#YLAXLG908

*Kent County Recreation Center, Turf Field 1683 New Burton Road, Dover.* This pick-up league is designed to develop fundamental skills and techniques that will help prepare your game at the next level. All players will be placed on teams by the coaching staff and will compete in games over the 6-week time frame. Players need to provide their own equipment (helmet, mouthpiece, gloves, elbow/shoulder pads and stick). Min 10, Max 70. For more information, call Joe Paugh at 302-744-2486 or email at [Joseph.Paugh@kentcountyde.gov](mailto:Joseph.Paugh@kentcountyde.gov)

## PICKLEBALL LADDER LEAGUE

Ages: 18 & up                              Fee: \$30/person  
Days: Tue                                  Hours: 6:00 p.m.  
Sess: Sept 10 – Oct 8                      AC#PBLEAG910

*Kent County Recreation Center, 1683 New Burton Rd, Dover.* Individual registration only. League will play 6 weeks. Basic understanding of Pickleball rules and game play is necessary. Trophies awarded to 1st and 2nd place finishers. Min 12, Max 24.

# MUSIC/ DANCE

## KCRC BEGINNER SOUL LINE DANCING

Ages: 16 & up                              Fee: \$41  
Days: Tue                                  Hours: 6:30 – 7:30 p.m.  
Sess: Sept 17 – Oct 15                      AC#KCRCSLD917  
Sess: Oct 22- Nov 26                      AC#KCRCSLD1022  
(no class 11/5)  
Sess: Dec 3 – Dec 17                      Fee: \$28

*Kent County Recreation Center, Multipurpose Rm, Dover.* Looking for a great way to burn calories, meet new people, and improve your coordination while enhancing your dance moves? Well look no further; Soul Line Dancing is for you. Come out and join the fun at our beginner level classes as you learn popular dances such as the Electric Slide, Wobble, Cupid Shuffle, Up-town Funk, and many more. Instructors: Chuck & Kelly Cooper C & K Soul Line Dancing Min 10, Max 25.

# SPORT INSTRUCTION

## BEGINNER PICKLEBALL CLASS

Ages: 16 & up Fee: \$65  
Days: Tue Hours: 8:00 a.m. – 10:00 a.m.  
Sess: Sept 3 - 24 AC#PICKLB903  
Sess: Oct 1 - 22 AC#PICKLB1001  
Sess: Oct 29 - Nov 26 AC#PICKLB1029  
(No class Nov 5)

Kent County Recreation Center, 1683 New Burton Rd., Dover. **This class is for beginners only.** Pickleball is designed for all skill and age levels and is very easy to learn. Knowledge of the game is not necessary. Basic drills, skills and rules of the game will be taught. Our indoor courts will make your Pickleball experience much more memorable. Min 4, Max 14.

## INTERMEDIATE/ADVANCED PICKLEBALL INSTRUCTION

Ages: 16 & up Fee: \$65  
Days: Thu Hours: 8:00 a.m. – 10:00 a.m.  
Sess: Sept 5 - 26 AC#PICKLINA905  
Sess: Oct 3 - 24 AC#PICKLINA1003  
Sess: Oct 31 - Nov 21 AC#PICKLINA1031

Kent County Recreation Center, 1683 New Burton Rd., Dover. Are you ready to take your pickleball game to the next level? This course will cover intermediate-to-advanced pickleball skills such as: dinking, volleying, third shot drop, reset, lob, defend lob. Tactics will be taught for doubles play: serve, return of serve, transition to non-volley zone, going on attack at the non-volley zone. Min 4, Max 14.

## INTERMEDIATE PICKLEBALL CLASS

Ages: 16 & up Fee: \$65  
Days: Tue or Thu Hours: 10:30 a.m. – 12:30 p.m.  
Sess: Sept 3 - 24 AC#PICKLI903  
Sess: Sept 5 - 26 AC#PICKLI905  
Sess: Oct 1 - 22 AC#PICKLI1001  
Sess: Oct 3 - 24 AC#PICKLI1003  
Sess: Oct 29 - Nov 26 AC#PICKLI1029  
(no class Nov 5)  
Sess: Oct 31 - Nov 21 AC#PICKLI1031

Kent County Recreation Center, 1683 New Burton Rd., Dover. Some previous experience of Pickleball is necessary. This class is designed for individuals who want to expand their knowledge and skills of the game. Serving, positioning, lob shots, dinking are just some of the skills that will be taught during this class. Min 12, Max 36.



## LEARN TO ICE SKATE/BEGINNER

**HOCKEY SKATING SCHOOL - 1**  
Ages: 4 & up Fee: \$80 (Includes skate rental)  
Days: Sat Hours: 10:50 a.m. – 11:40 a.m.  
Sess: Sept 7 - Oct 12 AC#LIS197  
(no class 9/14)  
Sess: Oct 19 - Nov 23 AC#LIS11019

Centre Ice Rink, Harrington. Learn to Ice Skate is devoted to teaching beginner skaters who are not interested in playing hockey basic skating skills. Beginner Hockey Skating School (BHSS- I) is devoted to teaching beginner skaters who are interested in playing ice hockey the basic skating fundamentals in hockey skates.

**REQUIRED EQUIPMENT: Bike helmet or approved ice hockey helmet with cage, hockey or winter gloves, Rental skates are available at no extra charge.**

## LEARN TO PLAY/BEGINNER HOCKEY SKATING SCHOOL - 2

Ages: 4 - 14 Fee: \$96 (Includes skate rental)  
Days: Sat Hours: 11:50 a.m. – 12:50 p.m.  
Sess: Sept 7 - Oct 12 AC#LIS297  
(no class 9/14)  
Sess: Oct 19 - Nov 23 AC#LIS21019

Centre Ice Rink, Harrington. Beginner Hockey Skating School (BHSS- II) is devoted to teaching novice skaters who are interested in playing ice hockey and players who completed BHSS- I next level basic skating fundamentals and basic stick/puck skills in full equipment. Learn to Play is devoted to enhancing the hockey skills and game play basics needed to advance beginner players into youth ice hockey programs. Every week the players will also partake in some type of game to keep them coming back for more.

**REQUIRED EQUIPMENT: Every participant is required to have a mouth guard, wear an approved ice hockey helmet with cage, elbow pads, gloves, cup, shin guards, shoulder pads, pants and stick. Rental skates are available at no extra charge. Used equipment may be available to help offset the initial cost of starting hockey.**

## TOT & PARENT MULTI SPORT CLASS

Ages: 2-4 Fee: \$55  
Days: Thu Hours: 3:00 - 4:00 p.m.  
Sess: Sept 12 - Oct 17 AC#TRCPTM912

Kent County Recreation Center, 1683 New Burton Road, Dover. This is a Parent and child class that is a great introduction to a variety of sports for both parents and their emerging athletes. Parents will work with their child to develop skills and a love for sports. This class will cover a variety of sports including Soccer, Football, Baseball, Hockey, Basketball, & Volleyball. Min 5, Max 15.

## TOT MULTI SPORT CLASS

Ages: 4-6 Fee: \$55  
Days: Thu Hours: 4:00 - 5:00 p.m.  
Sess: Sept 12 - Oct 17 AC#TRCTMS912

Kent County Recreation Center, 1683 New Burton Road, Dover. This class is a great introduction to a variety of sports for emerging athletes. This class will teach fundamentals on how to play various sports and how to play with others. A variety of sports will be covered including: Soccer, Football, Baseball, Hockey, Basketball, & Volleyball. Min 5, Max 15.

## TOT INSTRUCTIONAL BASKETBALL

Ages: 4-6 Fees: \$40  
Day: Saturday Hours: 10:30 a.m. – 11:30 a.m.  
Sess: Sept 21 - Oct 19 AC#TBASKLG921

Kent County Recreation Center, 1683 New Burton Road, Dover. Participants will be placed on teams by Kent County Parks and Recreation. Players will be introduced to the rules and fundamentals of basketball. The main goal is to have fun!

## YOUTH VOLLEYBALL CLINIC

Ages: 7-14 Fees: \$50  
Days: Sat Hours: 9:00 a.m. – 12:00 p.m.  
Sess: Sept 14 AC#YVBC914  
Sess: Oct 19 AC#YVBC1019

Kent County Recreation Center, 1683 New Burton Rd Dover. Participants will learn the fundamentals of volleyball including how to serve, dig, and SPIKE. Participants will receive instruction tailored to their individual age and ability level. Clinics are designed specifically for the beginning male or female volleyball athlete. This program includes age-appropriate instruction, focusing on motor skills, ball skills, game skills and most importantly, fun! Min 10, Max 20.

# TOURNAMENTS

## PICKLEBALL TOURNAMENT

Ages: 20 & up Team Fee: \$50  
Days: Sat and Sun Hours: 8:00 a.m. start  
Sess: Dec 7 & 8

Kent County Recreation Center, 1683 New Burton Rd., Dover. Men's Doubles, Women's Doubles and Mixed Doubles. Register online at [pickleballbrackets.com](http://pickleballbrackets.com)

# CHILDREN'S HALLOWEEN FANTASY TRAIL

**BRECKNOCK COUNTY PARK**  
**80 Old Camden Road, Camden**

**SATURDAY, OCT. 12, 11:00 a.m. - 1:00 p.m.**  
**(Rain date: Sunday, October 13, 11:00 a.m. - 1:00 p.m.)**

**Ticket Fee: \$5.00 Per Person Regardless of age**

Designed for children ages 2 to 7. Come with no tricks, but to receive treats from some of your favorite cartoon and storybook characters at our Children's Halloween Fantasy Trail. You will enter the enchanted forest to begin your trick-or-treating adventure. Complimentary trick-or-treat bags will be provided to all paying children. **(CANDY BAGS WILL BE GIVEN AT THE END OF THE FANTASY TRAIL) CANDY GIVEN TO CHILDREN CAN CONTAIN PEANUTS AND/OR PROCESSED IN PLANTS THAT ALSO PROCESS PEANUTS. PLEASE CHECK FOR ALLERGY CONCERNS BEFORE ALLOWING CHILDREN TO CONSUME. NO REFUNDS! NO PETS ALLOWED ON THE TRAIL.**

If you are interested in sponsoring a scene for this event,  
please contact Joseph Paugh at 302-744-2486 or email at [Joseph.Paugh@kentcountyde.gov](mailto:Joseph.Paugh@kentcountyde.gov)

## Kent County Parks & Recreation

# NEW LEAGUE ANNOUNCEMENT

## CO-ED SOFTBALL LEAGUE

**Brown's Branch County Park, Harrington**  
**\$550 team entry fee**

**Sundays beginning September 8, 2024**  
**6-week regular season double-header games**  
**with single elimination playoffs**



Kent County Recreation Center 1683 New Burton Rd. Dover DE 19904



# Kent County Parks & Recreation

## JR. NBA PRESEASON INSTRUCTION

SEPTEMBER 4 - 30

### PRESEASON FEATURES:

- 60 minute practices every Mon & Wed
- 8 practice sessions
- Scrimages during the last 2 weeks
- T-shirts provided

### 2 AGE GROUPS

AGES 7-9  
6:00 - 7:00PM



### REGISTRATION DEADLINE

Participants must be registered  
before 5:00pm 9/4/24

AGES 10 - 12  
7:00 - 8:00PM



For More Information or to Register:

Call: 302-744-2495

[www.secure.rec1.com/DE/kent-county-de/catalog](http://www.secure.rec1.com/DE/kent-county-de/catalog)

mail: [ParksRec@kentcountyde.gov](mailto:ParksRec@kentcountyde.gov)



## KENT COUNTY PARKS & RECREATION



## NFL YOUTH FLAG FOOTBALL

TWO AGE DIVISIONS:

7-10yrs Division

11-14yrs Division

SEASON STARTS  
Sept 25th



# REGISTRATION PROCEDURES

• Registration will be accepted through the mail, in-person or on-line on a first-come, first-served basis. **NO PHONE IN REGISTRATION WILL BE ACCEPTED.** Cost of activity must be paid in full when registering except when stated differently. Please follow registration procedures listed below.

## ONLINE REGISTRATION

Online Registration catalog can be accessed via [secure.rec1.com/DE/kent-county-de/catalog](https://secure.rec1.com/DE/kent-county-de/catalog). MasterCard, Visa and Discover Card **payments are processed through Authorize.net (which will read Kent County Levy Court on statement);** however, refunds must be processed through Kent County Parks and Recreation; allow up to 2 weeks for processing. All other refund policies apply.

## CREDIT CARD USE POLICY

Kent County Parks and Recreation cares about the safety of your credit card information. We will no longer accept mailed or phoned in credit card payments. Credit card payments (Visa, MasterCard, Discover) can be made via our online registration catalog (CivicRec). Kent County Parks and Recreation can only accept credit card payment by authorized account holder as displayed on the card.

## PROGRAM ACCOMMODATIONS

The Kent County Parks and Recreation Division invites people with and without disabilities to enjoy our programs, parks, and facilities. It is the policy of the Kent County Levy Court that all programs be accessible to all Qualified Handicapped Individuals as provided in Section 504 of the Rehabilitation Act of 1973. If you or the person(s) you are registering need modification for your program of interest, please contact Mike Rigby at 302-744-2495 or email at [michael.rigby@KentCountyDE.gov](mailto:michael.rigby@KentCountyDE.gov) before registering to discuss this matter.

## TEXT MESSAGE NOTIFICATION

Through our registration software vendor, CivicRec, we have the capabilities of sending text message notifications directly to your mobile phone. The text message notification system would only be used for the program you are currently participating in and relate only to important messages such as cancellations, changes to schedule, or other necessary updates. In order to receive the text message notifications, you must submit your mobile carrier name when signing up for an account. If you have any questions regarding this helpful program, please call our office.

## REFUND POLICY

Registration fees for recreation programs/activities must be paid in advance and shall be refunded in full to the payer of record if the County cancels the program/activity. If a participant cancels his/her participation in a program at least **five (5) days** prior to the first scheduled day, a full refund shall be paid less a **\$5** processing fee pursuant to County ordinance. Refunds will not be given for any other reason.

## GENERAL INFORMATION

- Classes and activities are subject to cancellation for any reasonable cause.
- For weather and last minute cancellation information, please view our website at [kentcountyde.gov/home](https://kentcountyde.gov/home) and facebook.com/KentCountyParksandRec. Timely program cancellation notifications will be done by email or text notification from Staff.
- Please make sure that the instructor is present before dropping your child off at a program
- Arrive to pick up your child at least five minutes before the program's scheduled closing. Failure to pick up your child on time may result in expulsion from the program.
- A child may be expelled from a program with no refund after notifying parent of disciplinary problems.
- The Department may photograph programs and participants for publicity purposes, such as the brochure, facebook, twitter, etc.
- The Department has the right to adjust any of the program details in the brochure including fees, locations, instructors, times, days and starting dates.

## WAIVER AND RELEASE OF LIABILITY AND INDEMNITY AGREEMENT

I hereby acknowledge that in using the facilities, programs and equipment of Kent County Parks and Recreation, I do so entirely at my own risk and I assume the risk of any injury and/or damage while engaging in any physical exercise or activity or use of any facility on the premises. This assumption of the risk includes, without limitation, my use of the gymnasium, athletic courts, lobby, hallways, athletic fields, parks, sidewalk, parking lot, seating, or any equipment in the facility/park. I further agree to assume the risk in participating in any activity, class, program, instruction, or any event sponsored by Kent County Parks and Recreation (Kent County Levy Court).

By executing this Agreement, I HEREBY WAIVE, RELEASE AND FOREVER DISCHARGE, Kent County Levy Court and its past, present and future administrators, partners, employees, insureds, assigns, agents, and representatives in their personal and professional capacities (collectively "Kent County Parks and Recreation"), from all claims, demands, injuries, damages, actions or causes of action, and from all acts of active or passive negligence on the part of such entity, its servants, agents, or employees of any nature whatsoever, including attorneys' fees and costs arising out of or connection with the aforementioned activities. I further agree to indemnify and hold harmless Kent County Levy Court from any claims, demands, injuries, damages, actions or causes of action, loss, liability, damage or cost which Kent County Levy Court may incur due to my presence at or use of the facility. I further agree that the foregoing warranty, waiver and indemnity agreement is intended to be as broad and inclusive as permitted by the law of the State of Delaware and that if any portion is deemed to be invalid, it is expressly agreed that the remaining terms shall remain in full legal force and effect.





# KENT COUNTY PUBLIC LIBRARY

497 S. Red Haven Lane, Dover | 302-744-1919



## FALL 2024 PROGRAMS & EVENTS

All programs are free, open to the public, and held at the Kent County Public Library, located at 497 South Red Haven Lane, Dover unless stated differently. **Preregistration is required as noted.** You can register online at [www.tinyurl.com/KCPLcalendar](http://www.tinyurl.com/KCPLcalendar) or by calling (302) 744-1919. *(Parent or other responsible adult must be present in the library, including during programs for any child/youth under the age of 16.)*

**The Library reserves the right to adjust program dates, times, enrollment maximums and program/ event cancellations.**

*It is the policy of the Kent County Levy Court that all programs be accessible to all qualified handicapped individuals as provided in Section 504 of the Rehabilitation Act of 1973. If you or the person(s) you are registering need reasonable accommodation for your program of interest, please contact the Kent County Public Library before registering to discuss the matter with the program coordinator(s).*

The Library may photograph programs and participants for publicity purposes, including posting to social media sites.



### SEPTEMBER IS LIBRARY CARD SIGN-UP MONTH!

Sign-up for a new library card or renew your current card. Our goal is 10 new registrations or renewals each day in September! (Please bring proof of residency + photo ID to complete registration.)

### ALL AGES PROGRAMS

#### CELEBRATE HISPANIC HERITAGE

**Saturday, September 28, 1:00 - 5:00 p.m.**

Kent County's Hispanic population has increased 149% since 2000. Enjoy classical guitar, stories featuring Latino families, and the vibrant film *Encanto*. This event is a lively introduction to our community's rich cultural heritage!

#### AUTHORS & AUDIENCES

**Sunday, November 10, 2:00 - 4:00 p.m.**

Meet over two dozen local/regional authors and illustrators to learn more about their work, purchase copies of their books, and support our efforts to encourage creativity and talent! Our 2024 special featured guest will be award-winning author **Wayne Thomas Batson**, who has penned or coauthored seventeen novels and sold well over half-a-million books.



“Like” or follow us on Facebook for the most up-to-date information about library happenings.  
“KCPLibrary”

### YOUTH PROGRAMS

Please respect the age ranges for programs. All programs are free and open to the public, unless stated differently. Preregistration is required as noted. Please call (302) 744-1919 or stop by the circulation desk to register. You can also register online at [www.tinyurl.com/KCPLcalendar](http://www.tinyurl.com/KCPLcalendar). **(Parent or other responsible adult must be present in the library, including during programs, for any child/youth under the age of 16.)**

#### MANDALA PAPER WEIGHT

**Wednesday, September 25, 4:00 p.m.**

Learn how to craft a bohemian paper weight using hand-painted mandala rocks. Pre-register ages 12-18.

#### KIDS COSTUME SWAP

**Sunday, October 13, 1:30 - 4:30 p.m.**

Help stock our first ever Kids Costume Swap by donating a clean, gently used costume! If you have a clean, gently used Halloween costume you're happy to send to another loving home, please drop it off at the Library's Circulation Desk between October 1-11. Then on Sunday, October 13, we invite families to come and pick out a costume (while supplies last). One costume per child; children must be present to participate.



# KENT COUNTY PUBLIC LIBRARY

497 S. Red Haven Lane, Dover | 302-744-1919



## T-REX TEA-PARTY

**Saturday, November 9 – 11:00 a.m. - Noon**

You're cordially invited to a T-rex tea-party. Join us for delicious snacks, a special dinosaur guest, and tons of fun. Adults and children (ages 6-9) **MUST** pre-register for this free event. (Made possible, in part, through funding from the Friends of Kent County Public Library)

## WORDS OF APPRECIATION

**Wednesday, November 20 at 4:00 p.m.**

Whether you are looking for an activity to pass the time, or a meaningful gift for a special individual, this project will leave you feeling motivated and grateful. Pre-register ages 12-18.

## THE NUTCRACKER

**Sunday, December 1 at 2:00 p.m.**

Meet the characters from the Ballet Theatre of Dover's beloved holiday classic as dancers share scenes from the ballet to live narration. Take-and-make craft available for all attendees. All ages.

## CONNECTION: BEYOND THE CURRICULUM

**Tuesdays, September 10-October 29 – 4:00 - 4:45 p.m.**

Part of the challenge of raising extreme thinkers is keeping up with their natural curiosity, which often goes beyond standardized curriculum. Geared primarily towards homeschooled students, this group meets weekly to complete at-home projects to share the following week with the group. Preregistered ages 8-13; no walk-ins.

## STORY!TIME (IN-PERSON)

**Thursdays at 10 a.m.**

Miss Robin has a wonderful line-up of stories, songs, activities, and crafts to explore! Check out the weekly theme on the library Facebook page at "KCPLibrary" Suitable for preschool/early elementary. Groups of 5 or more, please call ahead (302) 744-1919. Ages 5 and under

## PAWS FOR READING

**Thursdays, September 5 and 19, October 3 and 17, November 7 and 21 – 6:30 p.m.**

Bring your child to the library to read aloud for 10 minutes to a friendly therapy dog provided by PAWS for People. Studies show that reading aloud to animals can actually help children improve their reading skills. This is a great opportunity for beginner, reluctant and even beginning English learners to practice in a non-judgmental environment with a book of their choice. Teens and adults are welcome to read too! One reader per dog, per 10-minute reading session. Complete five sessions for a special prize! First come, first served. All ages

## YOUNG WRITERS/ILLUSTRATORS WORKSHOP

**Saturday, November 2 – 9:00 - 11:30 a.m.**

Published writers and illustrators lead workshops in writing as well as illustrating original work, while parents receive tips on fostering creativity in their talented youngsters! Preregister; no walk-ins. Ages 9-14; parents/guardians must stay in library!

## DELAWARE ANIME SOCIETY

**Saturdays, September 14, October 12 – 1:00 p.m.**

**No Meeting in November**

The Delaware Anime Society is a place for those with an interest in Japanese anime (animation), manga (graphic novels), cosplay, music and pop culture to meet in a fun and relaxed atmosphere. Ages 13 and up.

Useful online resources like; VetNow, HelpNow, JobNow, and Mango Languages are available only with a Kent County issued library card!

## ADULT PROGRAMS

All programs are free and open to the public, unless stated differently. Preregistration is required as noted. Please call (302) 744-1919 or stop by the circulation desk to register. You can also register online at [www.tinyurl.com/KCPLcalendar](http://www.tinyurl.com/KCPLcalendar)

*Please note that all in-person programs and events are contingent upon the current public health situation regarding COVID-19 and are subject to cancellation based on state mandates/recommendations for public gatherings and capacity percentages.*

## FREE FOR ALL CONCERTS

- **Saturday, September 28 at 1:00 p.m. – Paul Sedacca, Classical Guitar**
- **Friday, October 11 at 6:30 p.m. – The First State Brass Quartet**
- **Friday, November 1 at 6:30 p.m.- Lavender Brown, Blues Singer**
- **Friday, November 15 at 6:30 p.m. – 287 Delaware Army National Guard Band**



# KENT COUNTY PUBLIC LIBRARY

497 S. Red Haven Lane, Dover | 302-744-1919



## BOOK GROUPS

KCPL will have limited copies of each selected title available for checkout (while supplies last). Please call the Library at (302) 744-1919 to reserve a copy. You can also request copies through the Delaware Libraries online catalog at [www.lib.de.us](http://www.lib.de.us) with your library card and 4-digit PIN. Many of the titles are also available in large print, e-book and audiobook formats.

## BOOKED FOR LUNCH

**Mondays, September 9, October 7, and November 4 at 12:30 p.m.**

Pack a brown bag lunch, bring the book you're reading or recently read along, and share your response to the book(s) with the group – no assigned titles, but your TBR list is sure to increase!

## ARTS & LETTERS BOOK GROUP

**Wednesdays, September 4, October 2, and November 6 at 12:30 p.m.**

Enjoy insightful discussion focused on the arts and literature. New members welcome! September 4: *All the Beauty in the World* (Bringley); October 2: *Marie Antoinette: The Journey* (Fraser); November 6: *Portrait of a Killer: Jack the Ripper, Case Closed* (Cornwell, P)

## THE COMFORTABLY CONNECTED

### BOOK CHAT

**Thursdays, September 12, October 10, November 7, December 12 at 6:30 p.m.**

Readers lead a rich interior life fed by books with which they feel a connection. Enjoy discussions that span many genres with other avid readers. September 12: *The Teacher* (McFadden); October 10: *The House Across the Lake* (Sager); November 7: *The Idea of You* (Lee); December 12: *Forever, Interrupted* (Reid)

## ERUDITE: THE VERY WELL-READ

### BOOK DISCUSSION

**Thursdays, September 26, October 24, November 21 at 6:30 p.m.**

Read across a broad spectrum of literature both old and new, including contemporary or classic novels, plays, poetry and short story anthologies. September 26: *The Count of Monte Cristo* (Dumas); October 24: *1984* (Orwell); November 21: *Pride and Prejudice* (Austen)

## STARBOOKS

**Fridays, September 6, October 4, November 1 10:00 a.m. at Starbucks (4009 S Dupont Highway)**

Coffee brings us together to have conversations about literature and entertainment in readers' third place: combining libraries and coffee houses. Find out what happens when we "move" the library to Starbucks to discuss novels that have transitioned from books to screen! September 6: *Bridgerton* series (Quinn/Netflix); October 4: *Haunting in Venice* (Christie/Hulu); November 1: *The Sweet Magnolias* series (Woods/Netflix)



## FRIDAY THE 13TH BOOK CLUB: ENDER'S GAME (CARD)

**Friday, September 13, 11:00 p.m. (off-site at McGlynn's Pub)**

This book club meets from 11 p.m. - Midnight, only in months where the 13th occurs on a Friday to discuss speculative fiction. *Ender's Game* by Orson Scott Card follows the most gifted group of young people on and off Earth, as they practice war games that could change the fate of the human race.

## BATSON BOOKS: A DISCUSSION

**Friday, October 11, 12:30 p.m. (hybrid)**

Award-winning Wayne Thomas Batson lives in Anne Arundel County, MD, where he has penned or co-authored seventeen novels that have sold over half-a-million copies. He will be visiting KCPL on November 10th! Select any of his titles to discuss at this readers meetup. If you plan to attend online via Zoom, preregister to receive the link.

## SPOTLIGHT ON DELAWARE HISTORY

The "Diamond" State may be small, but it is packed with fascinating stories from history. Join us for a unique look at the history of the First State. **All programs begin Wednesdays at 6:30 p.m. Please pre-register, as space is limited.**

- **Seized in September\*: Revolutionary War Comes to Delaware** led by Kim Burdick, Delaware History specialist, **September 18**
- **Chickens on Delmarva** led by local author Joanne Guilfoil, **October 9**
- **The Ritchie Boys\*: The Allies' Secret Weapon** led by historian Dr. Linda De Roche, **November 6**

*\*Made possible in part by Delaware Humanities and the National Endowment for the Humanities: Democracy demands wisdom; [dehumanities.org](http://dehumanities.org)*

Kent County Public Library was selected by the Delaware Library Association as the 2024 Library of the Year!



# KENT COUNTY PUBLIC LIBRARY

497 S. Red Haven Lane, Dover | 302-744-1919



## MOBILE LIBRARY (“BOOKMOBILE”) 2023 AUTUMN SCHEDULE

<b>TUESDAY</b>	11:45 a.m. - 12:15 p.m. 1:45 p.m. - 2:30 p.m. 3:00 p.m. - 3:45 p.m.	BYLERS (ROUTE 8, DOVER) HARMONY AT KENT FELTON FIRE HALL
<b>WEDNESDAY</b>	9:00 a.m. - 9:45 a.m. 10:15 a.m. - 11:15 a.m. Noon - 1:00 p.m.	KENT COUNTY RECREATION CENTER KENT COUNTY ADMIN (555 BAY RD) SPRING MEADOW
<b>THURSDAY</b>	9:00 a.m. - 11:00 a.m. 12:30 p.m - 1:30 p.m.. 3:45 p.m.- 4:45 p.m.	CALVARY CHRISTIAN ACADEMY WESTMINSTER VILLAGE TRE SORELLE (WYOMING)
<b>FRIDAY</b>	11:45 a.m. - 12:15 p.m. 1:45 p.m. - 2:30 p.m. 3:00 p.m. - 3:45 p.m.	DE VETERANS HOME (MILFORD) FREDERICA SENIOR CENTER DAFB PLAYGROUND

*We care about the health and safety of our mobile library drivers and its users. Therefore, this Winter, the mobile library will suspend stops from December through February.*

**The Library and Mobile Library will be closed September 2, November 5 & 11, and November 28-29. The Mobile Library will be off-road the week of Thanksgiving.**

## FRIENDS OF KENT COUNTY PUBLIC LIBRARY

### RODS FOR READING CAR SHOW

**Saturday, August 31 (Rain Date: September 1)  
G&R Campground, 4075 Gun & Rod Club Rd, Houston DE**

The Friends of Kent County Public Library invite you to come out and enjoy a day of amazing cars, vendors, food concession and more. Last year’s event drew nearly 100 car enthusiasts from all over the East Coast to show off their rides. Free admission.

>>> Vehicle registration still being accepted (\$15/vehicle). In addition to the Car Show there is a book sale, 50/50 Raffle and a Basket Raffle. For information about registration, vendor space, or in general, call Phoenix at (302) 744-1919 or email librarykentco@gmail.com.

### LIBRARY FRIENDS HOLIDAY BAZAAR

**Friday & Saturday, November 22 & 23**

The Friends of Kent County Public Library invite you to their first Holiday Bazaar! With over two dozen vendors and craft collections, a curated book sale, holiday treats, raffles, door prizes and more! Vendors, if you would like an application, please email librarykentco@gmail.com as there are only a few spots still available. This is the Friends official email for this event and all questions and applications will be through this email only.

**DONATING:** Boxed donations of books and movies in good condition will only be accepted during the **first five days of each month** during the Library’s open hours of operation, February through November. In December and January, donations are not taken. Please: Do not place donations in book drop or outside the building or mobile unit. We appreciate your consideration and generosity.

## GENERAL PARK RULES

1. Drugs, alcoholic beverages, and weapons are prohibited.
2. Audio devices, public address systems, and musical instruments are prohibited.
3. Motor vehicles restricted to designated parking areas only.
4. No littering, all parks are “carry-in, carry-out” facilities.
5. Lewd behavior and obscene language is prohibited.
6. No solicitation or vending without official Kent County permit.
7. No person shall harm any animal, vegetation or structure.
8. Dogs must be on a connecting leash and not pose a threat to any person.
9. No auto repair or maintenance activities in parking areas.
10. Use of metal detectors and the removal of antiquities are prohibited.
11. Organized team and league practice by official Kent County permit only.
12. Use of park and parking lots is restricted to daylight hours only.
13. No golf or equestrian activities.
14. Commercial photography is prohibited.
15. No open fires.
16. All persons using park facilities do so at their own risk.
17. No water activities unless permitted.

For specific park rules, please call the Parks and Recreation Office.

Kent County Park Facility Chart	Brecknock	Browns Branch	Big Oak	Lebanon Landing	Tidbury Creek	Kesselring	Hunn Nature
<b>Location:</b>	80 Old Camden Rd, Camden	1415 Killens Pond Rd, Harrington	417 Big Oak Rd, Smyrna	1400 Sorghum Mill Rd, Dover	2233 South State Street, Dover	1683 New Burton Rd, Dover	1624 Sorghum Mill Rd, Dover
Public Restroom	√	√	√			√	
Playground	√	√	√		√		
Horseshoe Pits	√	√					
Nature Trail	√	√			√		√
Walking Trail	√	√	√			√	√
Sand Volleyball	√	√					
Pavilion	√		√		√		
Softball Fields	√	√	√				
Multi-Purpose Fields	√	√	√			√	
Picnic Area	√	√	√	√	√		
Outdoor Grill	√	√	√		√		
Nature Center	√						
Fitness Area	√	√	√				
Bike Rack	√	√	√	√	√	√	
Field Rentals	√	√	√			√	
Stage	√						
Fishing Pond					√		
Dog Park					√		
Fishing Pier				√			
Boat Ramp				√			
Recreation Center						√	



## PAVILION USE GUIDELINES

Pavilions are intended for general public use with the following restrictions:

1. No individual or group may hold, reserve, rope off, or otherwise take up more space/tables than needed AT THE TIME OF OCCUPATION.
2. No individual or group may require current users to leave/vacate the pavilion.
3. Decorations (balloons, table cloth, streamers, signs, etc.) for any gathering are prohibited.
4. Any Kent County Co-sponsored Event will be posted with specific date of event for public notice prior to the event.
5. All park facilities are “carry -in, carry-out” facilities. Please remove all trash upon your departure.
6. Amplified music (boom boxes, DJ services, PA systems, etc.) are prohibited.

Questions? Please call the Parks and Recreation Office at 302-744-2495.

## DROP IN PUNCH CARD

All drop-in activities at the Kent County Recreation Center require a valid “Drop-In Punch Card” to participate. The \$20 punch card is good for 10 single drop-in activity sessions (\$2 per session) such as basketball, pickleball, soccer, volleyball, etc. (Refer to posted schedule on the website, Facebook and Office for times.) If you are pre-registered for a fee based program you do not need a drop-in punch card for those programs.

### HOW TO PURCHASE

Punch Cards may be purchased in person at the Kent County Recreation Center:

Regular Business Hours – Monday through Friday, 8:00 a.m. to 5:00 p.m. using Cash or Credit Card ONLY.

Non Business Hours – Monday through Friday after 5:00 p.m. and Weekends – subject to the following restriction; limit of 2 per purchaser, CASH ONLY (no bills greater than \$20 will be accepted.)

Registration form must be filled out completely with each purchase.

### ADDITIONAL INFORMATION

Cards are not available for online purchase, no refunds or exchanges, lost or stolen cards will not be replaced. You may use your card for guests or groups, as long as there are enough punches available.



# Kent County Parks & Recreation

## **PICKLEBALL TOURNAMENT**



\*Men's Doubles  
\*Women's Doubles  
\*Mixed Doubles

Saturday/Sunday  
December 7th and  
8th  
8:00 a.m. start  
\$50/person



Kent County Recreation Center 1683 New Burton Rd. Dover DE 19904

### Connect

*with us*

### Share

Follow

Like

Facebook  
Instagram  
X  
Youtube  
Online

@KentCountyParksAndRec  
@KCParksRec  
@KCParksRec  
Kent ParksRec  
[www.secure.rec1/com/DE/kent-county-de/catalog](http://www.secure.rec1/com/DE/kent-county-de/catalog)

# Kent County Parks & Recreation

## JR. NBA BASKETBALL LEAGUE AGES 7 - 16



**INDIVIDUAL REGISTRATION**  
**\$80**

- PRACTICE MON / GAMES WED
- 8 WEEK\* DEVELOPMENTAL LEAGUE
- PLAYER SHOWCASE NIGHTS WEEK 1
- GAMES START WEEK 3
- 20 MINUTE HALVES WITH RUNNING CLOCK
- JR. NBA JERSEYS PROVIDED

**REGISTRATION DEADLINE**  
**FRIDAY OCTOBER 11TH 5PM**

**DONT WANT  
 SPACE IS LIMITED**



**jr.nba**

For More Information or to Register:  
 Call: 302-744-2495    [www.secure.rec1.com/DE/kent-county-de/catalog](http://www.secure.rec1.com/DE/kent-county-de/catalog)    Email: [ParksRec@kentcountyde.gov](mailto:ParksRec@kentcountyde.gov)



**SCAN ME**

**KENT COUNTY PARKS AND RECREATION**  
1683 NEW BURTON ROAD  
DOVER, DE 19904

PRSR STD  
U.S. POSTAGE  
**PAID**  
DOVER, DE  
PERMIT #23

ECRWSS  
**POSTAL CUSTOMER**

# **Make A Difference Day 2024**

**Saturday October 26, 2024**

**9 a.m. – 12:00 p.m.**

**Brecknock County Park**

**Howell Mill Nature Center**

**80 Old Camden Road, Camden, DE 19934**

Kent County Parks and Recreation is looking for families, individuals, groups and volunteer organizations to help Kent County observe Make a Difference Day 2024. Volunteers will be removing invasive species and performing a litter cleanup within Brecknock County Park.

There will be something for all ages and abilities to do. If available please bring loppers, hand pruners, shovels, and metal garden rakes. Kent County Parks and Recreation will have a limited amount of hand tools on site. Be sure to dress appropriately for outdoor work and the weather, wear long pants, long-sleeved shirts, work shoes or boots and bring work gloves.

If you wish to volunteer, please pre-register by clicking on the link below or you can also register onsite the day of the event. The registration table will be set up at the Howell Mill Nature Center. Snacks, hotdogs and beverages will be available for all volunteers.

To pre-register as a volunteer, please access the following website: **[secure.rec1.com/DE/kent-county-de/catalog](https://secure.rec1.com/DE/kent-county-de/catalog)** select the special events tab.

For more information about this special public event, call: Michael Rigby, Kent County Division of Parks and Recreation, 302-744-2492 or e-mail him at: [michael.rigby@kentcountyde.gov](mailto:michael.rigby@kentcountyde.gov)